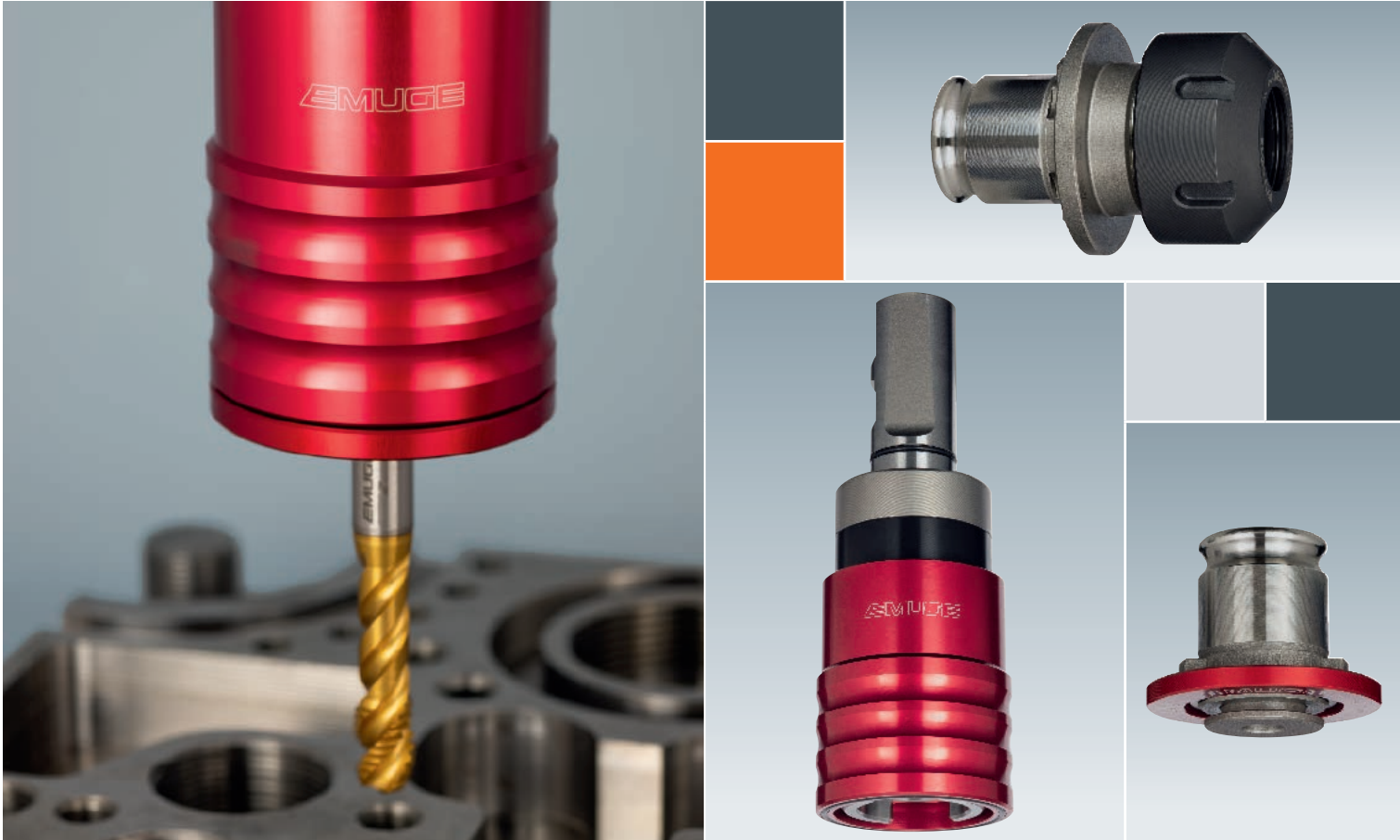




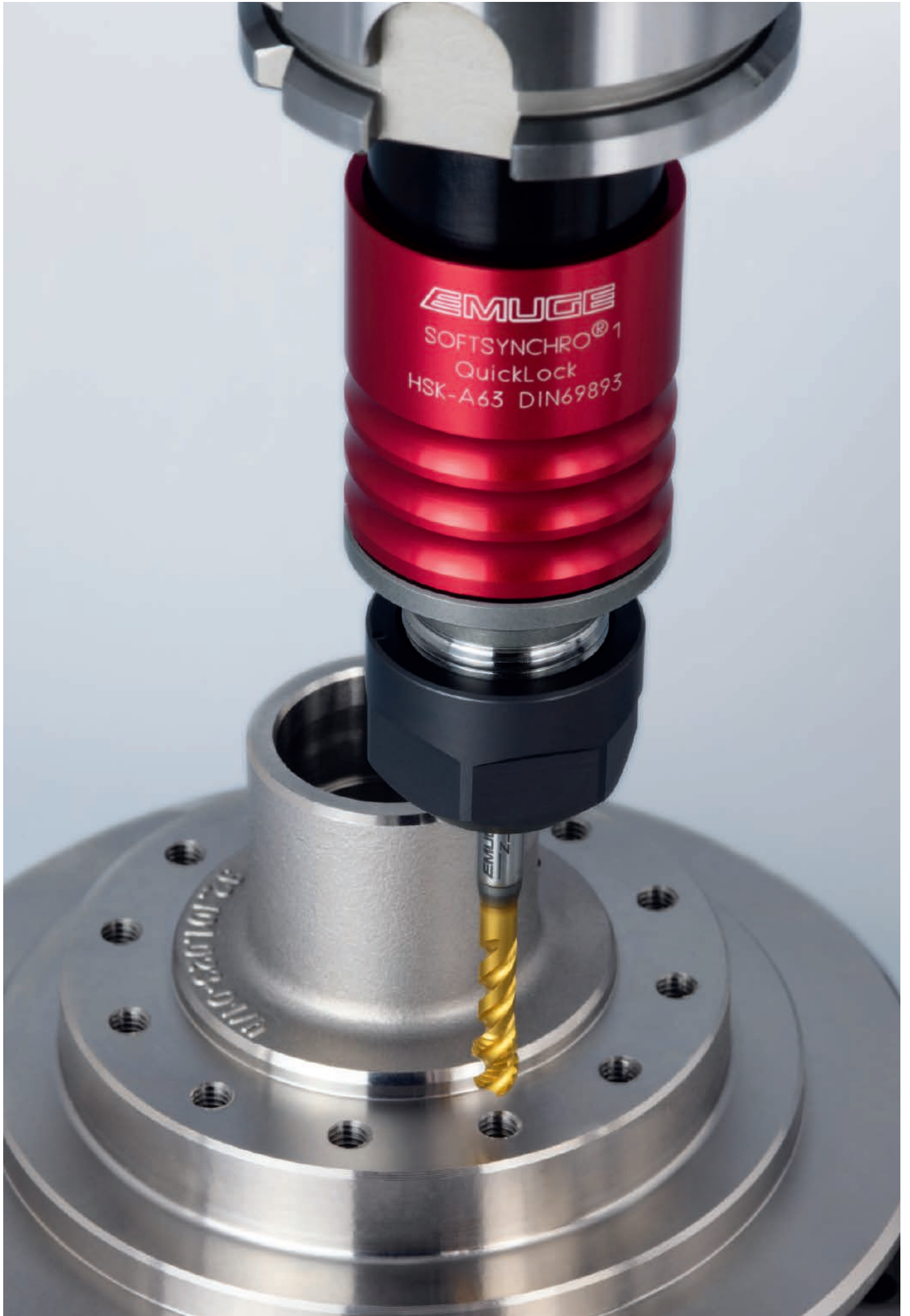
■ Made
■ in
■ Germany



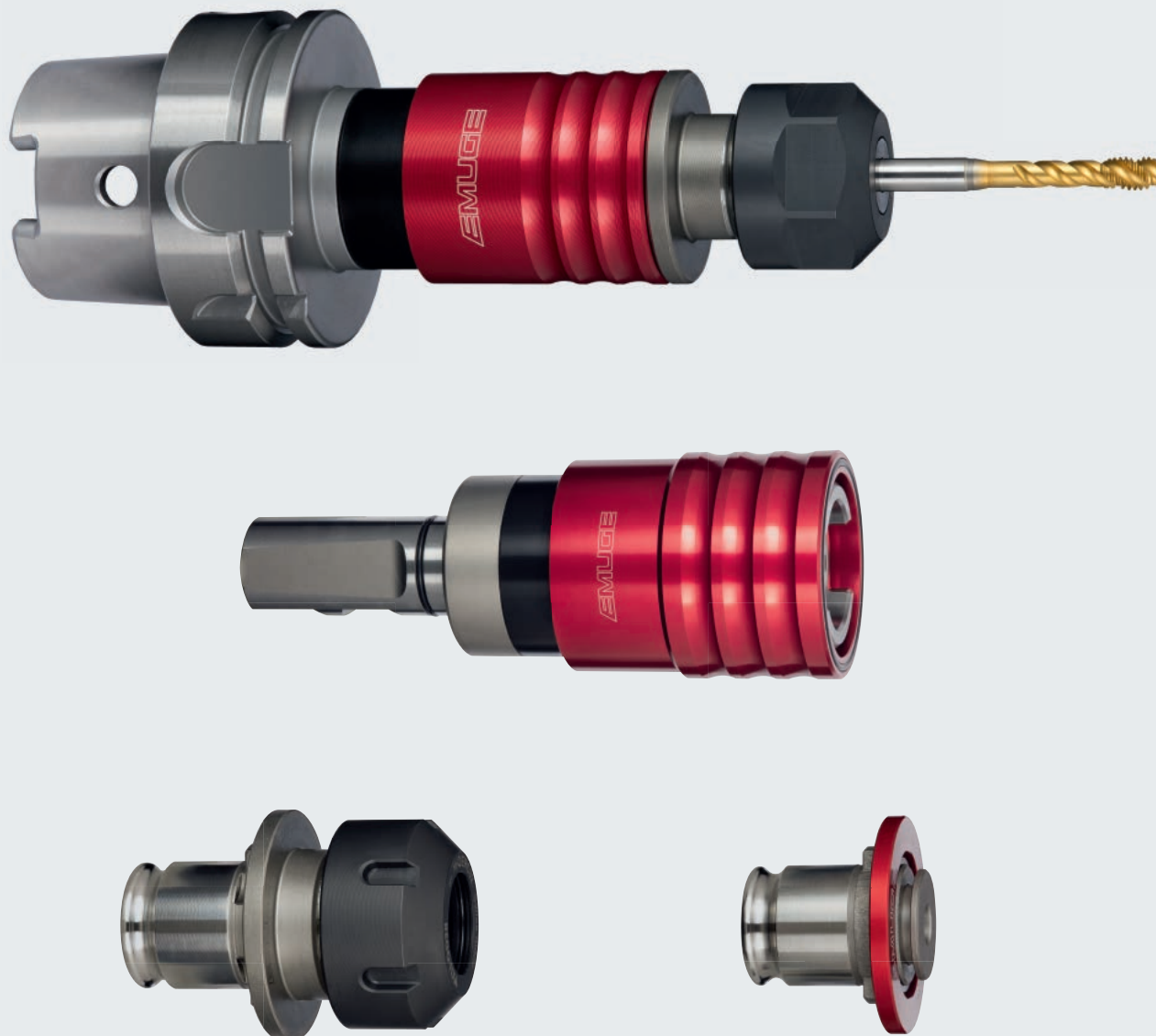
Softsynchro® QuickLock

EMUGE

Softsynchro® 快换丝锥刀柄手册
Quick-Change Tap Holders with Proven Softsynchro® Technology



Softsynchro® QuickLock



特点：

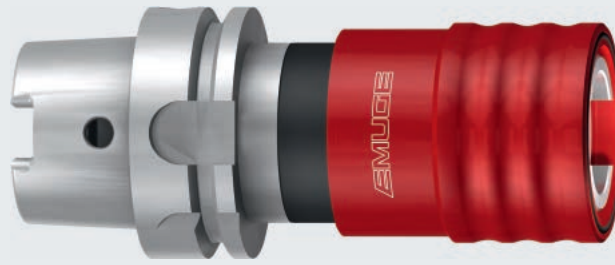
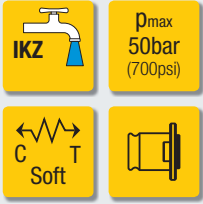
- 无须额外工具即可更换快换夹头
- 密封夹持套，可避免铁屑和切削液进入快换丝锥刀柄
- 螺纹刀具夹紧不受刀柄影响
- 加工中心内更换螺纹刀具无须辅助工具
- 减少快换夹头和快换丝锥刀柄之间的径向间隙
- 快换丝锥刀柄与快速夹头EM/QuickLock和EM-Z/QuickLock相结合，径向和轴向密封防尘
- 带有筒夹的EM-Z/QuickLock快换夹头可以对螺纹工具进行长度预调整
- 经过验证的Softsynchro® 技术
- 兼容所有商用转换柄

Specifications:

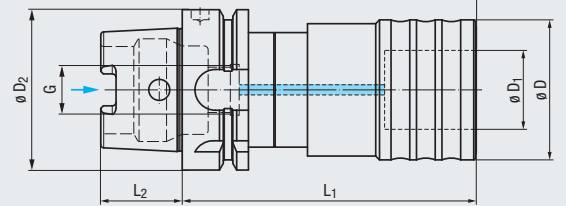
- Change of the quick-change adapter without additional tool
- Sealed grip sleeve which protects the quick-change tap holder against chips and emulsion
- Clamping of the threading tool independent of tool holder
- The threading tools clamped in the quick-change adapter can be changed without tools in the machining centre
- Reduced radial backlash between quick-change adapter and quick-change tap holder
- The quick-change tap holder combined with quick-change adapters EM/QuickLock and EM-Z/QuickLock is axially and radially hermetically sealed against dirt
- The quick-change adapter type EM-Z/QuickLock with collet enables a length preadjustment of the threading tools
- Proven Softsynchro® technology
- Compatible with all commercial adapters

Softsynchro® QuickLock

DIN 69893 A



根据DIN69873带有数据芯片孔
With bore for data chip according to DIN 69873



用于具有同步主轴的机床 For use on machines with synchronous spindle

类型 Type			$\varnothing D_2$	$\varnothing D$	$\varnothing D_1$	L_1	L_2	G	C	T	订货编号 Article no.	
Softsynchro® 1 QuickLock	M4 - M12	EM 01(-Z)/QuickLock	HSK-A63	39	19	90	32	M18 x 1	0,5	0,5	F3601C04.1	●
			HSK-A100	39	19	96	50	M24 x 1,5	0,5	0,5	F3601C06.1	●
Softsynchro® 3 QuickLock	M8 - M20	EM 03(-Z)/QuickLock	HSK-A63	55	31	115	32	M18 x 1	0,5	0,5	F3603C04.1	●
			HSK-A100	55	31	122	50	M24 x 1,5	0,5	0,5	F3603C06.1	●

更多设计可根据要求提供
Further designs upon request

附件 Accessories



快换夹头EM/QuickLock系列
Quick-change adapters EM/QuickLock » 6



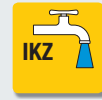
快换夹头EM-Z/QuickLock系列
Quick-change adapters EM-Z/QuickLock » 7



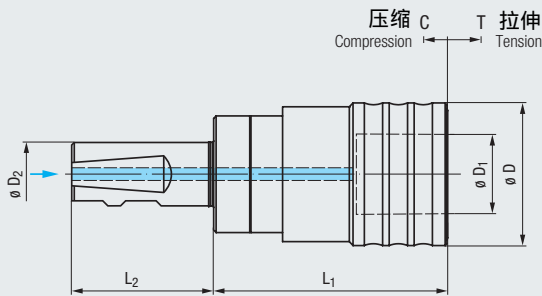
冷却润滑管和扳手附件
Coolant tubes and wrenches

Softsynchro® QuickLock

DIN 1835 B+E





p_{max}
50bar
(700psi)



用于具有同步主轴的机床

For use on machines with synchronous spindle

类型 Type			$\varnothing D_2$	$\varnothing D$	$\varnothing D_1$	L_1	L_2	C	T	订货编号 Article no.	
Softsynchro® 1 QuickLock	M4 - M12	EM 01(-Z)/QuickLock	20	19	39	67	51	0,5	0,5	F3601G25.1.44	●
			25	19	39	67	57	0,5	0,5	F3601G26.1.44	●
Softsynchro® 3 QuickLock	M8 - M20	EM 03(-Z)/QuickLock	25	31	55	94	57	0,5	0,5	F3603G26.1.44	●

更多设计可根据要求提供
Further designs upon request

附件 Accessories



快换夹头EM/QuickLock系列
Quick-change adapters EM/QuickLock

» 6



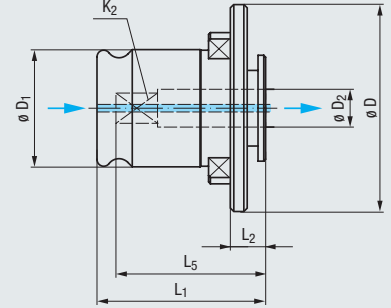
快换夹头EM-Z/QuickLock系列
Quick-change adapters EM-Z/QuickLock

» 7



主轴连接柄
Adapter shanks

EM/QuickLock



类型 Type	EM 01-QuickLock	EM 03-QuickLock
	M4 - M12	M8 - M20
$\varnothing D$	39	55
$\varnothing D_1$	19	31
L_1	29	45
L_2	7	10

DIN				订货编号 Article no.	L_5		订货编号 Article no.	L_5	
$\varnothing D_2$	K_2								
4,5	3,4	M4	M6	F4521104.6	23	●			
6	4,9	M4,5 - M6	M8	F4521106.6	25	●			
7	5,5	M7	M9 - M10	F4521107.6	25	●			
8	6,2	M8	M11	F4521108.6	26	●	F4523108.6	38	●
9	7	M9	M12	F4521109.6	27	●	F4523109.6	39	●
10	8	M10		F4521110.6	27	●	F4523110.6	40	●
11	9		M14				F4523111.6	41	●
12	9		M16				F4523112.6	41	●
14	11		M18				F4523113.6	43	●
16	12		M20				F4523114.6	44	●

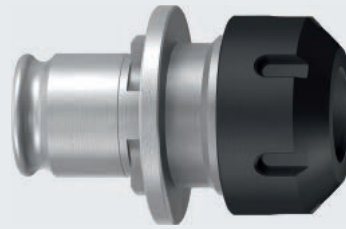
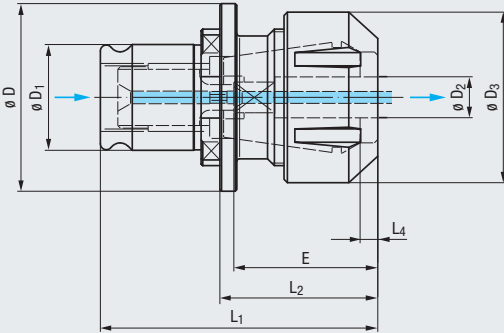
JIS				订货编号 Article no.	L_5		订货编号 Article no.	L_5	
$\varnothing D_2$	K_2								
5	4	M4		F4521207.6	22	●			
5,5	4,5	M5		F4521915.6	25	●			
6	4,5	M6		F4521916.6	25	●			
6,2	5		M8	F4521920.6	25	●	F4523920.6	37	●
7	5,5		M10	F4521107.6	25	●	F4523107.6	37	●
8,5	6,5		M12	F4521925.6	27	●	F4523925.6	38	●
10,5	8		M14				F4523933.6	40	●
12,5	10		M16				F4523215.6	42	●
14	11		M18				F4523113.6	43	●
15	12		M20				F4523944.6	44	●

1) 支持使用带内部冷却供应的切削/挤压丝锥
If used with taps / cold-forming taps with internal coolant supply

更多设计可根据要求提供
Further sizes upon request

大直径环形圈能够密封前端面
Large ring handle enables sealing of the front face

EM-Z/QuickLock



p_{max}
50bar
(700psi)

L+ 2 mm



类型 Type		$\varnothing D_2$			$\varnothing D$	$\varnothing D_1$	$\varnothing D_3$	L_1	L_2	L_4	订货编号 Article no.	
EM 01-Z/QuickLock	M4,5 - M10	6 / 7	ER 20 (GB)	Hi-Q/ERC 20	39	19	34	61	39,5	5	F4511001.6D6	●
	M8 - M12	8 / 9			39	19	34	61	39,5	5	F4511001.6D8	●
	M10	10			39	19	34	61	39,5	5	F4511001.6D10	●
EM 03-Z/QuickLock	M8 - M12	8 / 9	ER 32 (GB)	Hi-Q/ERC 32	55	31	50	81,5	46,5	5	F4513001.6D8	●
	M10 - M16	10 - 12			55	31	50	81,5	46,5	5	F4513001.6D10	●
	M18 - M20	14 - 16			55	31	50	81,5	46,5	5	F4513001.6D14	●

1) 支持使用带内部冷却供应的切削/挤压丝锥
If used with taps / cold-forming taps with internal coolant supply

更多设计可根据要求提供
Further designs upon request

交货时, 包含长度调整螺钉以及锁紧螺帽, 密封盘
Length adjustment screw as well as clamping nut for sealing disks are included in the delivery

大直径环形圈能够密封前端面
Large ring handle enables sealing of the front face

附件 Accessories



筒夹ER (GB) 类型
Collets type ER (GB)



密封盘DE/ER类型
Sealing disks type DS/ER



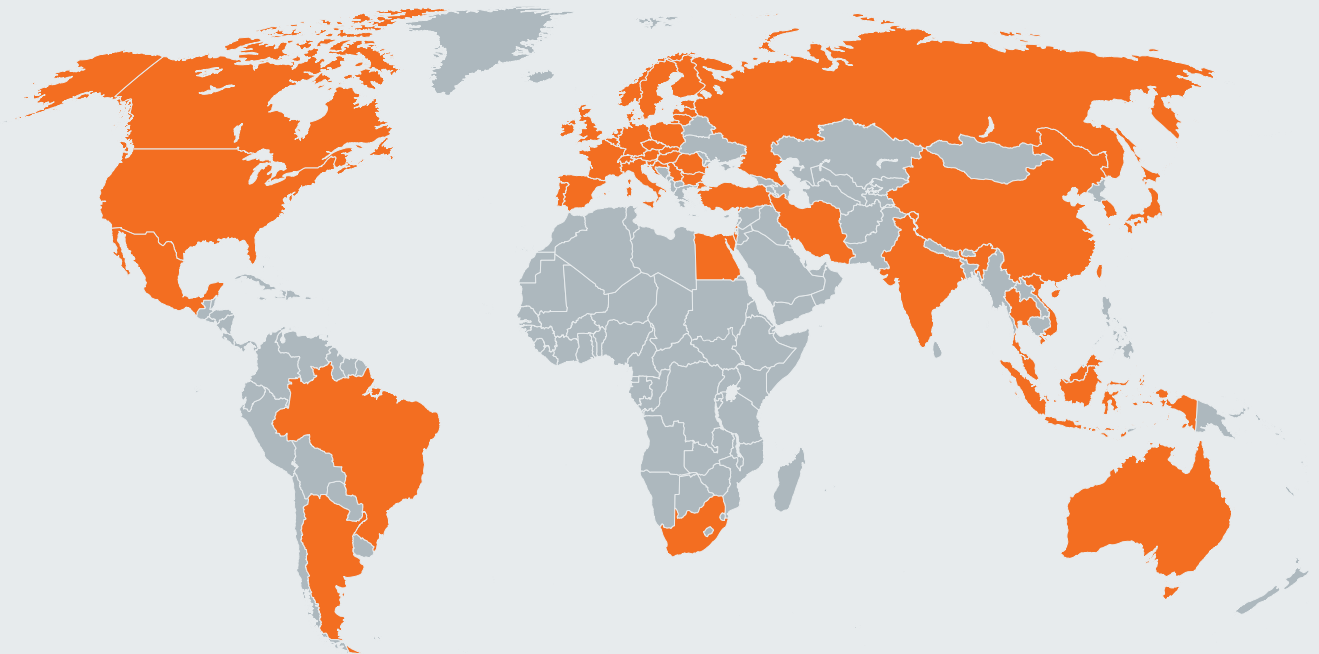
AEU适配器头
Adapter head AEU



冷却液喷射盘KS/ER类型
Coolant flush disks type KS/ER

夹持深度E Clamping depths E

筒夹 Collets				ER 20 GB	ER 32 GB
锁紧螺母 Clamping nuts				Hi-Q/ERC 20	Hi-Q/ERC 32
DIN					
$\varnothing D_2$	K_2			E	E
6	4,9	M4,5 - M6	M8	31	
7	5,5	M7	M9 - M10	31	
8	6,2	M8	M11	36	36
9	7	M9	M12	37	37
10	8	M10		41	41
11	9		M14		42
12	9		M16		42
14	11		M18		44
16	12		M20		45



关于EMUGE-FRANKEN销售组织,请浏览www.emuge-franken.com/sales
EMUGE-FRANKEN sales partners, please see www.emuge-franken.com/sales

埃莫克法兰肯精密工具(苏州)有限公司

中国苏州相城区阳澄湖镇岸山东横港街18号

+86-512-62860560

+86-512-62860561

China@emuge-franken.com.cn

www.emuge-franken.com.cn

EMUGE-Werk Richard Glimpel GmbH & Co. KG Fabrik für Präzisionswerkzeuge

Nürnberger Straße 96-100
91207 Lauf
GERMANY

+49 9123 186-0

+49 9123 14313

FRANKEN GmbH & Co. KG Fabrik für Präzisionswerkzeuge

Frankenstraße 7/9a
90607 Rückersdorf
GERMANY

+49 911 9575-5

+49 911 9575-327