



GUAN PIIN

PAINTING TECHNOLOGY CO., LTD.

INSTRUCTIONS - PARTS LIST

Model : PSS-311U
PISTON 3.5 : 1 AIR POWERED DRUM PUMPS



PSS - 311U
PISTON 3.5 : 1 AIR POWERED DRUM PUMPS
PSS - 311U 活塞式3.5:1氣動噴漆泵浦

A. MODEL (型號) : PSS - 311U (Stubby)

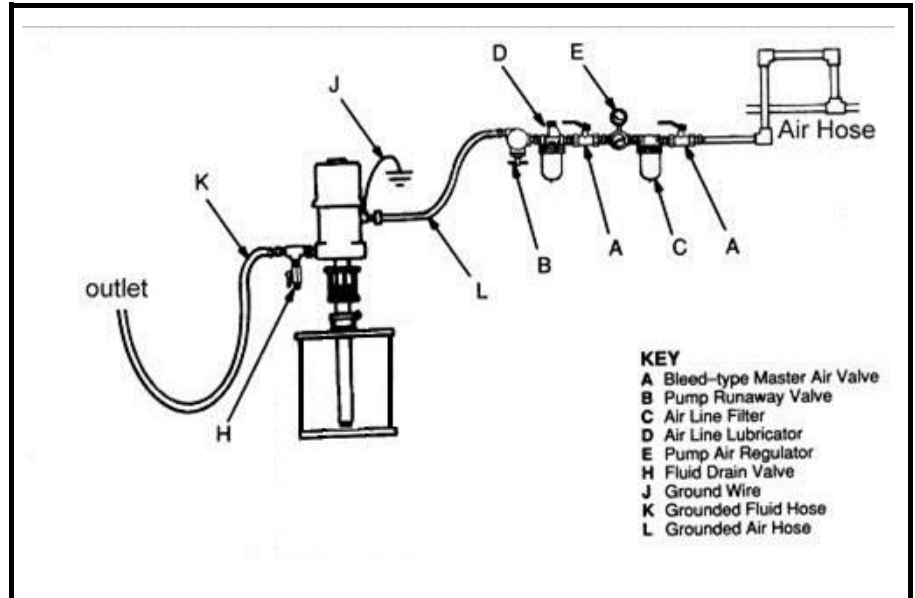
B. SPECIFICATIONS (規格)

Pressure Ratio (壓力比)	3.5 : 1
Maximum Continuous Flow (water tested) (最大輸出流量) (以水測試)	2.2 GPM (8.4 lpm) (2.2 加侖 / 分鐘 = 8.4 公升 / 分鐘)
Output Per Cycle (每次往復輸出流量)	120 c.c.m (120毫升)
Air Motor Repair Range (空氣馬達操作壓力範圍)	20 ~ 180psi
Max Paint Output Pressure (最大塗料輸出壓力)	350psi
Air Motor Diameter (空氣馬達直徑)	3"
Pump Material (泵浦接液材質)	304# stainless steel (304#不銹鋼)
Packing Material (迫緊材質)	Teflon / U.P.E (鐵弗龍 / 乙稀龍)
Air Inlet Size (空氣入口口徑)	1/4"pt
Fluid Outlet Size (塗料出口口徑)	3/4"pt
Fluid Inlet Size (塗料入口口徑)	1 1/2"pt
Temperature Conditions (適用溫度範圍)	40 - 212°F (4.4 - 100°C)
Noise Level (噪音值)	80dB(A) 以下
Pump Dimensions (泵浦尺寸)	D140mm x L835mm
Net Weight (淨重)	10.5kg

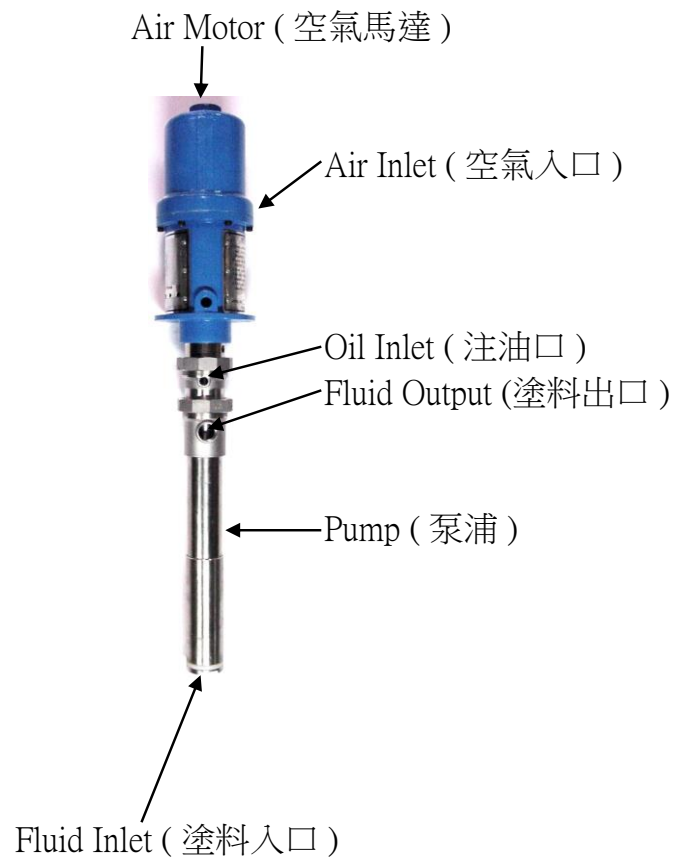
TYPICAL INSTALLATION (PSS-311U 安裝使用典範模式)

KEY (說明)

- A. 空氣主管路供應管制閥
- B. 泵浦空氣壓力安全閥
- C. 空氣過濾器
- D. 注油器
- E. 空氣調壓器及錶組合
- H. 塗料洩壓閥
- J. 接地線
- K. 塗料輸送管
- L. 空氣連接軟管

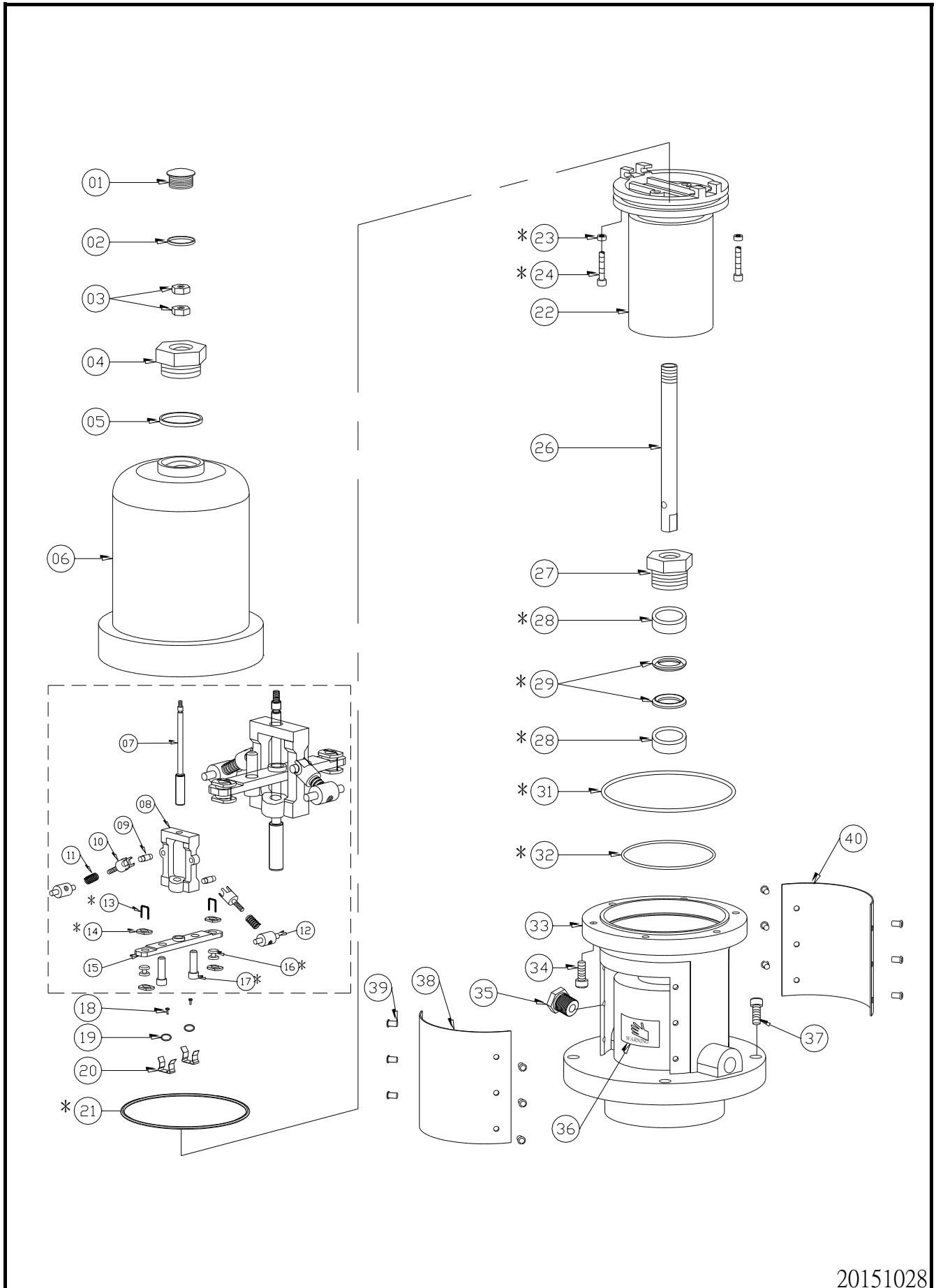


DESCRIPTIONS FOR EACH PORTIONS (PSS - 311U各部功能說明)



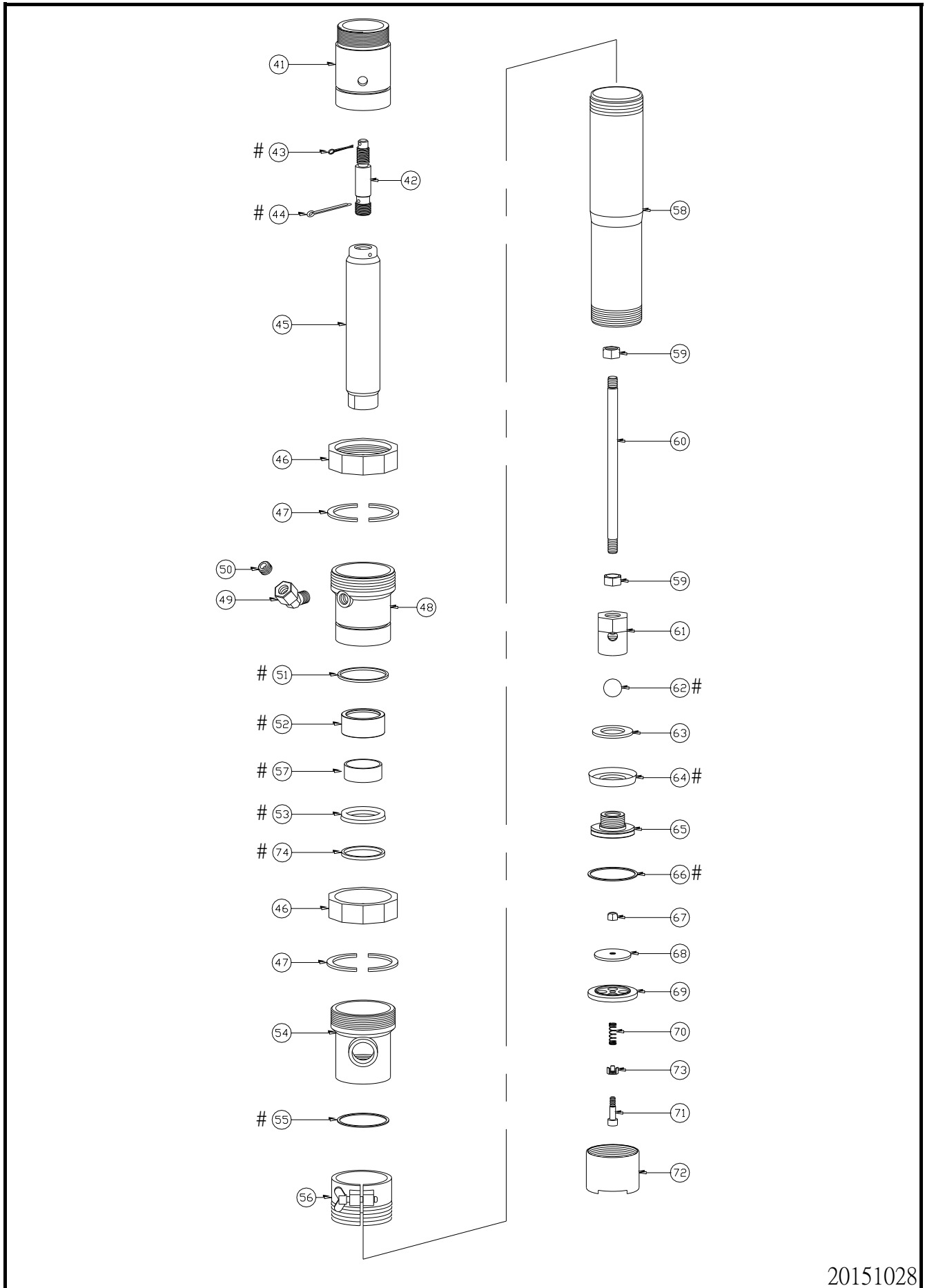
PSS - 311U PISTON 3.5 : 1 AIR POWERED DRUM PUMP DISASSEMBLY

PSS - 311U 活塞式 3.5 : 1氣動噴漆泵浦分解圖



PSS - 311U PISTON 3.5 : 1 AIR POWERED DRUM PUMP DISASSEMBLY

PSS - 311U 活塞式 3.5 : 1 氣動噴漆泵浦分解圖



PSS - 311U PISTON 3.5 : 1 AIR POWERED DRUM PUMP PARTS LIST

PSS - 311U 活塞式 3.5 : 1 氣動噴漆泵浦零件表

NO.	Part No.	中文說明	Description	Q'ty
01	AG-27B	螺帽	Nut	1
* 02	AG-27C	O型環	O-ring	1
03	NUT120	螺帽	Nut	2
04	AG-27	螺帽	Nut	1
* 05	AG-27A	O型環	O-ring	1
06	AG-03	氣缸	Cylinder	1
07	AG-13	導桿	Trip Rod	1
08	AG-04	梭動環	Shuttle	1
09	AG-09	插銷	Toggle pin	2
10	AG-07	環臂	Toggle arm	2
11	AG-08	彈簧	Spring	2
12	AG-06	搖臂桿	Rocker arm	2
* 13	AG-18	金屬絲	Lock wire	2
* 14	AG-15	調整螺帽	Adjusting nut	4
15	AG-05	汽門橫桿	Air valve bar	1
* 16	AG-16	橡皮墊圈	Rubber grommet	2
* 17	AG-12	橡膠閥門	Rubber valve	2
18	SCR546	螺絲	Screw	2
19	WAS200	墊片	Washer	2
20	AG-10	彈簧夾	Spring clip	2
* 21	AG-14	O型環	O-ring	1
22	AG-01	活塞	Piston	1
* 23	AG-17A	閥門密封墊	Valve seal	2
* 24	AG-17	進氣閥桿	Stem valve	2
26	AG-23	活塞管	Air piston tube	1
27	AG-19	迫緊螺帽	Packing nut	1
* 28	AG-22	油封座(凸)	Oil seal seat	2
* 29	AG-21	油封	Oil seal	2
* 31	AG-25	O型環	O-ring	1
* 32	AG-26	O型環	O-ring	1
33	AO-02	氣缸座	Base	1
34	SCR262	螺栓	Screw	6
35	AG-02B	消音器	Silencer	1
36	AG-02A	警告貼紙	Warning Sticker	2
37	SCR261	螺栓	Screw	4
38	AG-57GP	銘板	Plate	1
39	SWG-M5x6-ZN	螺栓	Screw	12
40	AG-57A	銘板	Plate	1

NO.	Part No.	中文說明	Description	Q'ty
41	GP000157	連結套	Housing	1
42	GP000223	連接桿	Rod	1
# 43	T03-043	插銷(小)	Pin (small)	1
# 44	T03-044	插銷(大)	Pin (Large)	1
45	GP000224	泵浦軸心	Coupling	1
46	T01-026	連接螺帽	Nut	2
47	T01-029	半圓軸環	Collar , Coupling	4
48	T01-030	注油座	Housing , SUS304	1
49	A12-2	45°內外牙接頭	45° Elbow	1
50	PT-04-HC-NI	塞頭	Screw	1
# 51	T01-031	墊片	Gasket , Teflon	1
# 52	T01-108	頂環	Ring	1
# 53	T01-077	U型迫緊	U-packing	1
54	T01-037	出料座	Bushing	1
# 55	T01-078	墊片	Washer	1
56	T01-042A	桶口固定座(含螺絲)	Mounting	1
# 57	RYT-B-15x2-1	耐磨環	Wear ring	1
58	T01-081	外缸	Cylinder	1
59	NNA-M10-S4	螺母	Screw nut	2
60	T01-084	連接桿	Rod , Connecting	1
61	T01-048	珠子蓋	Housing , Valve	1
# 62	UFO-07	珠子	Ball	1
63	T01-050	墊片	Washer	1
# 64	T01-088	L型迫緊	Packing	1
65	T01-089	逆止座	Seat , Check	1
# 66	T01-090	墊片	O-Ring	1
67	NNB-M6-S4	尼帽	Screw nut	1
68	T01-055	逆止片	Piece , Check	1
69	T01-092	逆止盤	Seat , Check	1
70	T01-057	彈簧	Spring	1
71	T01-044	螺絲	Screw	1
72	T01-095	入料座	Cylinder	1
73	T01-105	彈簧蓋	Spring Cover	1
# 74	T01-109	墊環	Gasket	1
*	GP000197	馬達修理包	Motor Repair Kit	
#	T03-060U	泵浦修理包	Pump Kit	