



COMPACT BOOSTER Electric Water Heaters

C Series

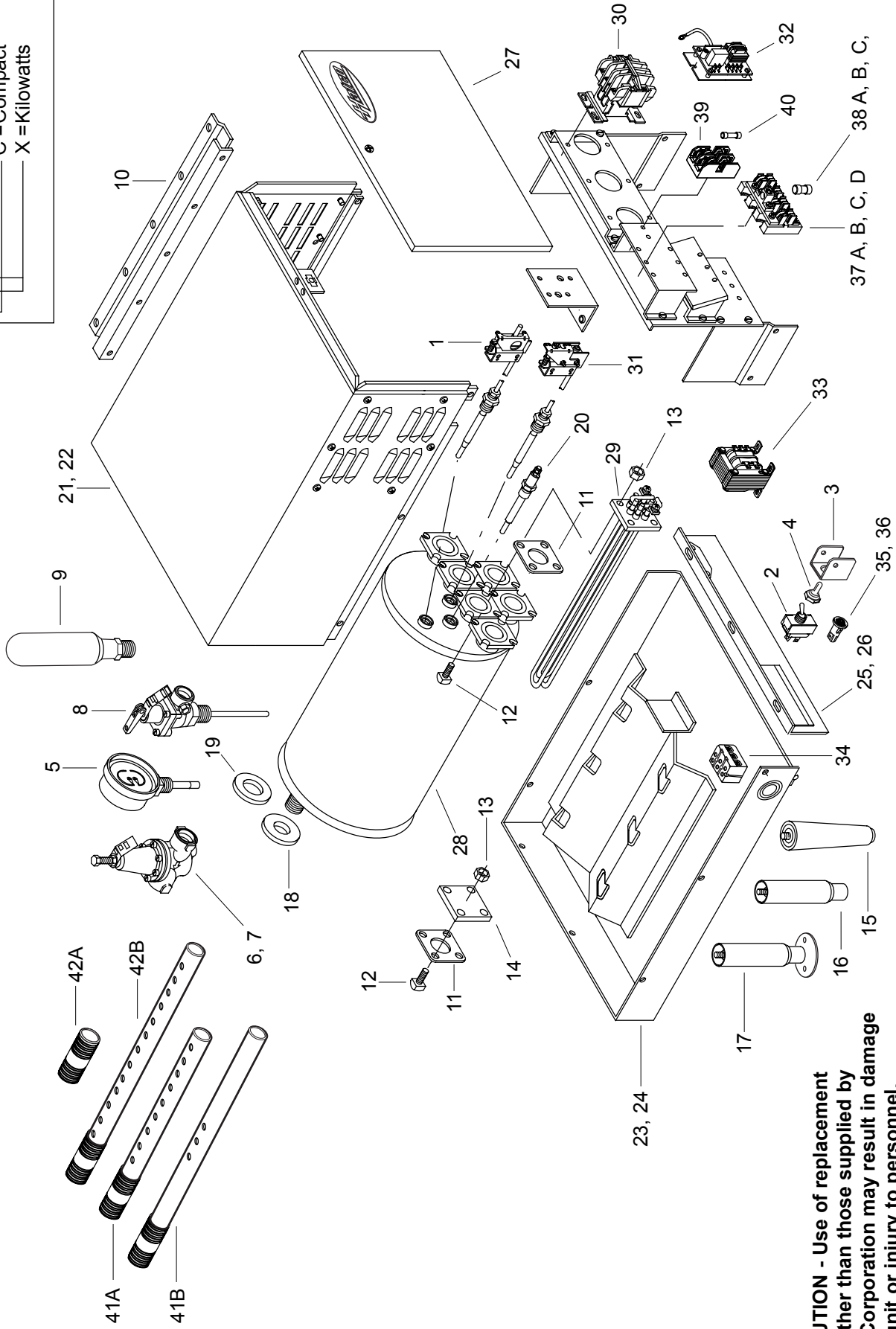
<i>C-4</i>	<i>C-13</i>	<i>C-30</i>
<i>C-5</i>	<i>C-15</i>	<i>C-36</i>
<i>C-6</i>	<i>C-17</i>	<i>C-39</i>
<i>C-7</i>	<i>C-18</i>	<i>C-45</i>
<i>C-9</i>	<i>C-24</i>	<i>C-54</i>
<i>C-12</i>	<i>C-27</i>	<i>C-58</i>

**REPLACEMENT
PARTS LIST**

HATCO COMPACT ELECTRIC BOOSTER HEATER C SERIES 4KW-58KW

Model Designation

C-XX
 C = Compact
 X = Kilowatts



⚠ CAUTION - Use of replacement parts other than those supplied by Hatco Corporation may result in damage to the unit or injury to personnel.

**PARTS COMMON TO ALL
COMPACT BOOSTER MODELS
4KW-58KW**

ITEM	DESCRIPTION	PART NO.	QTY.
1	High Limit, Thermostat	02.16.116.00	1
2	On/Off Toggle Switch	R02.19.008A.00	1
3	Guard, Toggle Switch	04.01.038.00	1
4	Toggle Switch Boot, Rubber	02.20.040.00	1
5	Temperature/Pressure Gauge	03.01.003.00	2
6	Pressure Reducing Valve, Iron	03.02.004.00	1
7	Pressure Reducing Valve, Brass (Optional)	03.02.015.00	1
8	Temperature/Pressure Relief Valve	03.02.022.00	1
9	Shock Absorber (Optional)	03.40.057.00	1
10	Booster Slide Bracket Set	R04.20.030.00	1
11	Gasket, Heating Element	02.11.012.00	1-6
12	Bolt, Element Mounting	05.04.022.00	4-24
13	Nut, Element Mounting	05.04.028.00	4-24
14	Blank Element Flange with Gasket and Hardware	R02.11.013.00	1
15	Leg, Plastic	05.30.069.00*	4
16	Leg, S.S. (Optional)	05.30.070.00*	4
17	Deck Mount Legs, S.S. (Optional)	05.30.073.00*	4
18	Ring Seal, In/Out Pipe	05.06.006.00	2
19	Ring Seal, Relief Valve	05.06.017.00	1
20	Probe, Low Water Cut Off	02.40.001.00	1

* 4-18KW units manufactured with serial number 1021059907 or lower use part number 05.30.008.00 for the plastic leg, 04.01.013.00 for the S.S. leg and 04.01.014.00 for the S.S. deck mount leg. 24-58KW units manufactured with serial number 1017179907 or lower use part number 05.30.008.00 for the plastic leg, 4.01.013.00 for the S.S. leg and 04.01.014.00 for the S.S. deck mount leg.

NOTE: S.S. is an abbreviation for stainless steel.

**COMPACT BOOSTER
SHEET METAL BODY PARTS**

ITEM	DESCRIPTION	4KW-18KW	24KW-58KW
21	Jacket, Painted	R04.01.032.00	R04.01.220.00
22	Jacket, S.S. (Optional)	R04.01.034.00	R04.01.254.00
23	Base, Painted	R04.01.020P.00	R04.01.201P.00
24	Base, S.S. (Optional)	R04.01.022.00	R04.01.251.00
25	Base, Front, Painted	R04.01.033.00	R04.01.233.00
26	Base, Front, S.S. (Optional)	R04.01.035.00	R04.01.255.00
27	Front Cover, S.S.	R04.01.036.00	R04.01.221.00

NOTE: Part numbers listed for sheet metal body parts apply only to units manufactured during or after October 1996. Consult factory with model and serial number for units manufactured before October 1996.

PARTS SPECIFIC TO MODEL C-36

ITEM	DESCRIPTION	208V		240V		480V		208V		240V		480V	
		Single Phase	Three Phase	Single Phase	Three Phase	Single Phase	Three Phase	Single Phase	Three Phase	Single Phase	Three Phase	Single Phase	Three Phase
28	Tank with Gaskets	R01.02.031.00	R01.02.031.00	R01.02.031.00	R01.02.031.00	---	R01.02.031.00	---	R01.02.031.00	---	R01.02.031.00	---	R01.02.031.00
29	Heating Element with Gasket Quantity	R02.04.610.00 6	R02.04.610.00 6	R02.04.611.00 6	R02.04.611.00 6	---	R02.04.613.00 6	---	R02.04.613.00 6	---	R02.04.611.00 6	---	R02.04.611.00 6
30	Contactors Quantity	02.01.017.00 3	02.01.017.00 3	02.01.017.00 3	02.01.015.00 2	---	02.01.015.00 2	---	02.01.015.00 2	---	02.01.018.00 3	---	02.01.016.00 2
31	Thermostat Control	02.16.003.00	02.16.003.00	02.16.003.00	02.16.003.00	---	02.16.003.00	---	02.16.003.00	---	02.16.003.00	---	02.16.003.00
32	Low Water Cut Off Board	02.01.006.00	02.01.006.00	02.01.006.00	02.01.006.00	---	02.01.006.00	---	02.01.006.00	---	02.01.006.00	---	02.01.001.00
33	Transformer, Step Down	02.17.004.00	02.17.004.00	02.17.004.00	02.17.004.00	---	02.17.005.00	---	02.17.005.00	---	---	---	---
34	Terminal Block	02.15.007.00	---	02.15.007.00	---	---	R02.15.046.00	---	R02.15.046.00	---	02.15.021.00	---	02.15.021.00
35	Indicator Light, Red	02.19.154.00	02.19.154.00	02.19.154.00	02.19.154.00	---	02.19.154.00	---	02.19.154.00	---	02.19.151.00	---	02.19.151.00
36	Indicator Light, Green	---	---	---	---	---	---	---	---	---	02.19.150.00	---	02.19.150.00
37A	Power Fuse Block Quantity	02.41.010.00 4	---	02.41.010.00 4	---	---	---	---	---	---	---	---	---
37B	Power Fuse Block Quantity	---	02.41.015.00 3	---	---	---	---	---	---	---	---	---	---
37C	Power Fuse Block Quantity	---	---	---	02.41.001.00 1	---	---	---	02.41.001.00 1	---	---	---	---
37D	Power Fuse Block Quantity	---	---	---	02.41.005.00 1	---	---	---	02.41.005.00 1	---	---	---	---
38A	Power Fuse (2 Pack) (40 Amp) Quantity	R02.03.031.02 6	R02.03.031.02 6	R02.03.031.02 6	R02.03.031.02	---	---	---	---	---	---	---	---
38B	Power Fuse (2 Pack) (60 Amp) Quantity	---	---	---	R02.03.033.02 3	---	---	---	R02.03.033.02 3	---	---	---	---
38C	Power Fuse (2 Pack) Quantity	---	---	---	---	---	---	---	---	---	---	---	---
39	Control Fuse Block	02.03.022.00	02.03.022.00	02.03.022.00	02.03.022.00	---	02.03.023.00	---	02.03.023.00	---	02.03.004.00	---	02.03.004.00
40	Control Fuse (2 Pack)	R02.03.014.02	R02.03.014.02	R02.03.014.02	R02.03.014.02	---	R02.03.013.02	---	R02.03.013.02	---	R02.03.001.02	---	R02.03.001.02
41A	Tube, Inlet Water	---	---	---	---	---	---	---	---	---	---	---	---
41B	Tube, Inlet Water	03.30.007.00	03.30.007.00	03.30.007.00	03.30.007.00	---	03.30.007.00	---	03.30.007.00	---	03.30.007.00	---	03.30.007.00
42A	Nipple, Outlet Water	---	---	---	---	---	---	---	---	---	---	---	---
42B	Tube, Outlet Water Electrical Diagram	03.30.009.00 HC1-2477	03.30.009.00 HC1-2479	03.30.009.00 HC1-2477	03.30.009.00 HC1-2481	---	03.30.009.00 HC1-2475	---	03.30.009.00 HC1-2475	---	03.30.009.00 HC1-1181	---	03.30.009.00 HC1-1183

Shaded area reflects export models only.

PARTS SPECIFIC TO MODEL C-36

ITEM	DESCRIPTION	240V Three Phase	380V Three Phase	415V Three Phase	480V Three Phase	600V Three Phase	380-400V CE 3 Wire	400-415V CE 3 Wire	380-400V CE 4 Wire	400-415V CE 4 Wire
28	Tank with Gaskets	R01.02.031.00	R01.02.031.00	R01.02.031.00	R01.02.031.00	R01.02.031.00	---	---	---	---
29	Heating Element with Gasket Quantity	R02.04.611.00 6	R02.04.601.00 6	R02.04.611.00 6	R02.04.613.00 6	R02.04.612.00 6	---	---	---	---
30	Contactors Quantity	02.01.016.00 2	02.01.016.00 2	02.01.016.00 2	02.01.016.00 2	02.01.016.00 2	---	---	---	---
31	Thermostat Control	02.16.003.00	02.16.003.00	02.16.003.00	02.16.003.00	02.16.003.00	---	---	---	---
32	Low Water Cut Off Board	02.01.001.00	02.01.001.00	02.01.001.00	02.01.001.00	02.01.001.00	---	---	---	---
33	Transformer, Step Down	---	R02.17.003.00	R02.17.002.00	R02.17.002.00	R02.17.009.00	---	---	---	---
34	Terminal Block	02.15.021.00	R02.15.046.00	R02.15.046.00	02.15.021.00	R02.15.046.00	---	---	---	---
35	Indicator Light, Red	02.19.151.00	02.19.151.00	02.19.151.00	02.19.151.00	02.19.151.00	---	---	---	---
36	Indicator Light, Green	02.19.150.00	02.19.150.00	02.19.150.00	02.19.150.00	02.19.150.00	---	---	---	---
37A	Power Fuse Block Quantity	---	---	---	---	---	---	---	---	---
37B	Power Fuse Block Quantity	---	---	---	---	---	---	---	---	---
37C	Power Fuse Block Quantity	---	---	---	---	---	---	---	---	---
37D	Power Fuse Block Quantity	---	---	---	---	---	---	---	---	---
38A	Power Fuse (2 Pack) Quantity	---	---	---	---	---	---	---	---	---
38B	Power Fuse (2 Pack) Quantity	---	---	---	---	---	---	---	---	---
38C	Power Fuse (2 Pack) Quantity	---	---	---	---	---	---	---	---	---
39	Control Fuse Block	02.03.004.00	---	---	---	02.03.016.00	---	---	---	---
40	Control Fuse (2 Pack)	R02.03.001.02	R02.03.005.02	R02.03.005.02	R02.03.005.02	R02.03.021.02	---	---	---	---
41A	Tube, Inlet Water	---	---	---	---	---	---	---	---	---
41B	Tube, Inlet Water	03.30.007.00	03.30.007.00	03.30.007.00	03.30.007.00	03.30.007.00	---	---	---	---
42A	Nipple, Outlet Water	---	---	---	---	---	---	---	---	---
42B	Tube, Outlet Water	03.30.009.00	03.30.009.00	03.30.009.00	03.30.009.00	03.30.009.00	---	---	---	---
	Electrical Diagram	HC1-1183	HS1-3887	HS1-3887	HS1-3887	HS1-3887	---	---	---	---

Shaded area reflects **export models only**.