

PERMCO

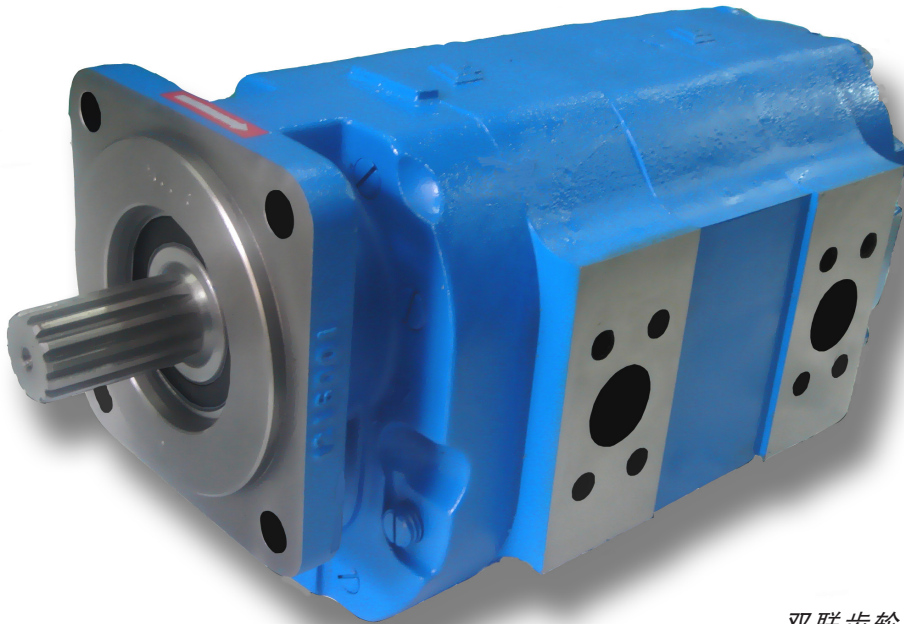
7600 系列

齿轮泵及马达

高压大排量滚动轴承齿轮泵及马达

PUMPS AND MOTORS

HIGH PRESSURE LARGE DISPLACEMENT ROLLER BEARING PUMPS AND MOTORS



双联齿轮泵

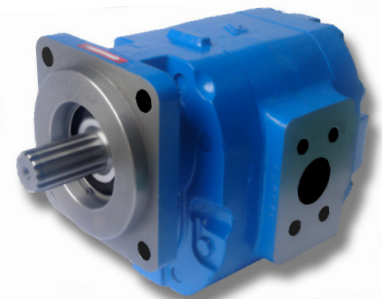
TANDEM GEAR PUMP

特点

- 本系列高压齿轮泵最高压力可达25MPa
- 排量从33.1ml/r-198.8ml/r
- 使用美国专利压力控制滚动轴承使泵的寿命提高30%
- 关键件由美国进口，提高了泵的可靠性
- 特有的二次密封结构能有效地提高泵的性能，已获得美国和中国的专利
- 先进的侧板结构，特殊的表面处理，耐压抗磨性强，已获得美国和中国的专利
- 泵和马达均有多种联接形式，联接尺寸符合SAE标准
- 可按用户要求设计成单联泵或多联泵

FEATURES

- High pressure gear pump with maximum pressure up to 3625 PSI
- Displacements from 2.02 cubic inch to 12.13 cubic inch
- US patent "controlled stress" Roller Bearings extends pump life by 30%
- US imported bearings, thrust plates, seals etc, improves reliability
- Patented US and China ring seal design improves performance and reliability
- Patented US and China thrust plate design with special surface treatment and wear coating supports high pressure applications
- A wide range of porting, mounting and shaft options available for SAE and European standards
- Customized single and multiple unit options available



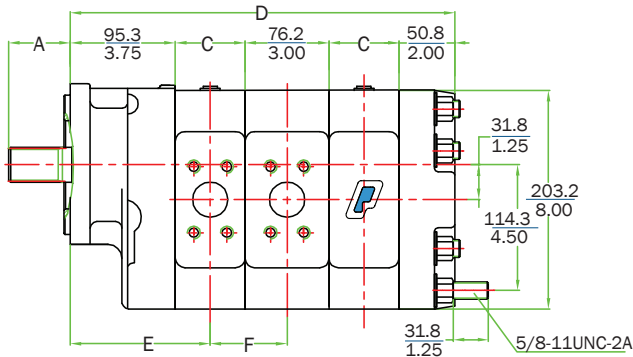
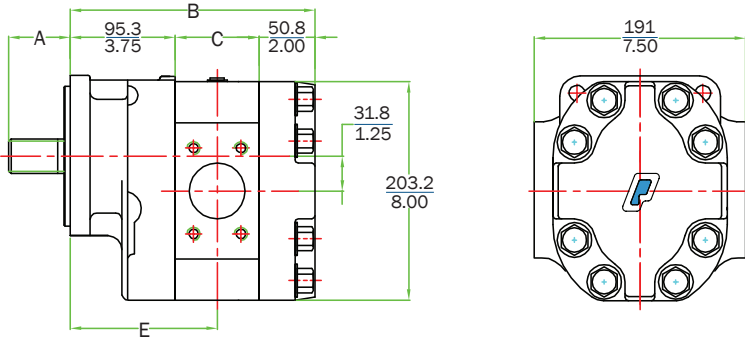
单泵

SINGLE

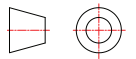
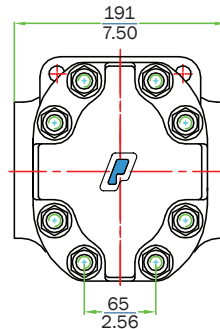


The Sensible Choice

7600系列尺寸数据 (mm/in) DIMENSIONAL DATA (mm/in)



- A. SAE "B" shaft shown, other shafts available
图示为SAE"B"轴伸, 轴伸型式有多种选择
- B. 6.75" plus gear width
171.5 mm 加齿轮宽度
- C. 1" plus gear width
25.4 mm 加齿轮宽度
- D. 10.75" plus total gear width
273.1 mm 加总齿轮宽度
- E. 4.25" plus half front gear width
108 mm 加前齿轮宽度的一半
- F. 2" plus half front gear width
50.8mm 加前齿轮宽度的一半



性能 PERFORMANCE

齿轮泵 Gear Pumps

Displacement 排量 ml/rev	Gear Width 齿宽 Inch 英寸	Rated Pressure 额定压力 MPa	Max Pressure 最高压力 MPa	Working Speed RPM 工作转速 转/分		Input Power 输入功率 KW
				Max 最高	Min 最低	
33.1	1/2"	21	25	2200	600	26.8
49.7	3/4"	21	25	2200	600	40.3
66.3	1"	21	25	2200	600	53.7
82.8	1-1/4"	21	25	2200	600	67.1
99.4	1-1/2"	21	25	2200	600	80.6
116.0	1-3/4"	21	25	2200	600	94.0
132.5	2"	21	25	2200	600	107.4
149.1	2-1/4"	21	25	2200	600	120.8
165.7	2-1/2"	21	25	2200	600	134.3
182.2	2-3/4"	18	21	2200	600	126.6
198.8	3"	18	21	2200	600	138.1

齿轮马达 Gear Motors

Displacement 排量 ml/rev	Input Flow 输入流量 2000 RPM LPM	Gear Width 齿宽 Inch 英寸	Rated Pressure 额定压力 MPa	Max Pressure 最高压力 MPa	Output Speed RPM 输出转速 转/分		Output Power 2000 RPM 输出功率 KW	Output Torque 输出扭矩 N-m
					Max 最高	Min 最低		
33.1	73.6	1/2"	21	25	2200	600	20.9	99.5
49.7	110.4	3/4"	21	25	2200	600	31.3	149.4
66.3	147.3	1"	21	25	2200	600	41.8	199.3
82.8	184.0	1-1/4"	21	25	2200	600	52.2	248.9
99.4	220.9	1-1/2"	21	25	2200	600	62.6	298.8
116.0	257.8	1-3/4"	21	25	2200	600	73.1	348.7
132.5	294.4	2"	21	25	2200	600	83.5	399.5
149.1	331.3	2-1/4"	21	25	2200	600	94.0	448.2
165.7	368.2	2-1/2"	21	25	2200	600	104.4	498.1
182.2	404.9	2-3/4"	18	21	2200	600	98.4	469.5
198.8	441.8	3"	18	21	2200	600	107.4	512.2

Permco USA
1500 Frost Road
P. O. Box 2068
Streetsboro, Ohio 44241
www.permco.com
E-mail: info@permco.com
Copyright © 2007

Permco (TianJin) Hydraulic Inc., Ltd.
泊姆克(天津)液压有限公司
236 Jinbindadao Free Trade Zone
保税区津滨大道236号
TianJin Port, China PC: 300461
中国天津港 邮编300461

Tel: 022-25761959
Fax: 022-25767035, 25761939
www.permcotj.com
E-mail: permco@permcotj.com
info: technic@permcotj.com

Permco TianJin Fluidpower Mfg. Co. Ltd.
泊姆克天津流体动力制造有限公司
Fenghua Industrial Park 9th Avenue
第九大街丰华工业园
TEDA, China PC: 300457
中国天津经济技术开发区 邮编300457