



SAMSUNG

Samsung Universal Print Driver

用户指南

想象无穷，可能无限

版权所有

© 2009 Samsung Electronics Co., Ltd. 保留所有权利。

本管理员指南仅用于提供信息。用户指南中的任何信息如有变更，恕不另行通知。

Samsung Electronics 对于因使用本用户指南引起的或与之相关的任何直接或间接损坏恕不承担任何责任。

- Samsung Universal Print Driver 是 Samsung Electronics Co., Ltd. 的商标。
- Samsung 和 Samsung 徽标是 Samsung Electronics Co., Ltd. 的商标。
- Microsoft、Windows、Internet Explorer 和 Windows Vista 是 Microsoft Corporation 在美国和其他国家 / 地区的注册商标或商标。
- 本文中的所有其他品牌、产品和公司名称为其各自所有者的商标。

版本 1.01

目录

版权所有 /2

目录 /3

简介

| | |
|--|---|
| Samsung Universal Print Driver 对比特定型号的驱动程序 | 4 |
| 系统要求 | 4 |

安装和卸载 SAMSUNG UNIVERSAL PRINT DRIVER

| | |
|---|---|
| 安装 Samsung Universal Print Driver | 5 |
| 卸载 Samsung Universal Print Driver | 6 |

使用 SAMSUNG UNIVERSAL PRINT DRIVER

| | |
|--|----|
| 访问 Samsung Universal Print Driver | 7 |
| 布局概述 | 8 |
| 更改 Samsung Universal Print Driver 设置 | 9 |
| 设置弹出窗口选项 | 9 |
| 设置打印机搜索选项 | 10 |
| 搜索打印设备 | 11 |
| 开始搜索 | 11 |
| 按地址搜索 | 11 |
| 创建收藏夹文件夹 | 12 |
| 帮助 | 13 |
| 使用 Samsung Universal Print Driver 打印 | 13 |
| 基本打印 | 13 |
| 更改所选打印机 | 13 |

LICENSE INFORMATION

| | |
|---|----|
| JPEG License | 14 |
| zlib/png License | 14 |
| OpenSSL License | 14 |
| Boost Software License | 14 |
| BSD License | 15 |
| Infozip | 15 |
| Intel Mobile Platform SDK | 15 |
| PNG:The Definitive Guide | 15 |
| Open BSD | 16 |
| Common Public License Version 1.0 (CPL) | 16 |

索引 /19

简介

Samsung Universal Print Driver 是可用于不同型号打印机的单一驱动程序。这不仅使用户可以立即访问 Samsung 打印设备，而且也可在不需要下载单独驱动程序的情况下，使用各种其他供应商基于 PDL 的设备。



- PDL 是指 PCL 和 PS。
- Samsung 不保证其他供应商的打印设备和不支持的 Samsung 型号的质量（单击  查看支持的 Samsung 设备列表）。对于不支持的 Samsung 型号，驱动程序将自动设置为可用的默认 PDL。

Samsung Universal Print Driver 对比特定型号的驱动程序

下表介绍了 Samsung Universal Print Driver 和基于产品的驱动程序之间的差异：

| | SAMSUNG UNIVERSAL PRINT DRIVER | 特定型号的驱动程序 |
|------|--|--|
| 用户界面 | 一致的用户界面。 | 不一致的用户界面。 |
| 安装 | <ul style="list-style-type: none">• 使用 Samsung Universal Print Driver 附带的安装程序文件下载并安装。• 通过执行安装程序文件来安装。 | <ul style="list-style-type: none">• 为每个设备手动查找、下载并安装驱动程序。• 通过 CD 自动播放或“添加打印机”向导安装。 |
| 设备查找 | 从整个 Samsung 打印机产品中轻松查找并访问推荐的设备。 | 手动查找设备。 |
| 可用性 | 在 Samsung 网站上提供。 | 在设备附带的 CD 或产品驱动程序中提供。 |


系统要求

Samsung Universal Print Driver 的最低系统要求如下：

| 操作系统 | 系统要求 (推荐) | | |
|--------------------------|--|-----------------|----------------|
| | CPU | RAM | 可用硬盘空间 |
| Windows Vista | Pentium IV 3 GHz | 512 MB (1 GB) | 15 GB |
| Windows XP | Pentium III 933 MHz (Pentium IV 1 GHz) | 128 MB (256 MB) | 1.5 GB 或更高 |
| Windows 2000 | Pentium II 400 MHz (Pentium III 933 MHz) | 64 MB (128 MB) | 600 MB |
| Windows 7 | Pentium IV 1 GHz 32 位或 64 位处理器或更高 | 1 GB (2 GB) | 16 GB |
| | <ul style="list-style-type: none">• 支持使用 128 MB 内存的 DirectX 9 图形（以启用 Aero 主题）• DVD-R/W 光驱 | | |
| Windows Server 2003 | Pentium III 933 MHz (Pentium IV 1 GHz) | 128 MB (512 MB) | 1.25 GB 到 2 GB |
| Windows Server 2008 | Pentium IV 1 GHz (Pentium IV 2 GHz) | 512 MB (2 GB) | 10 GB |
| Windows Server 2008 (R2) | Pentium IV 1 GHz (x86) 或 1.4 GHz (x64) 处理器 (2 GHz 或更快) | 512 MB (2 GB) | 10 GB |

安装和卸载 Samsung Universal Print Driver

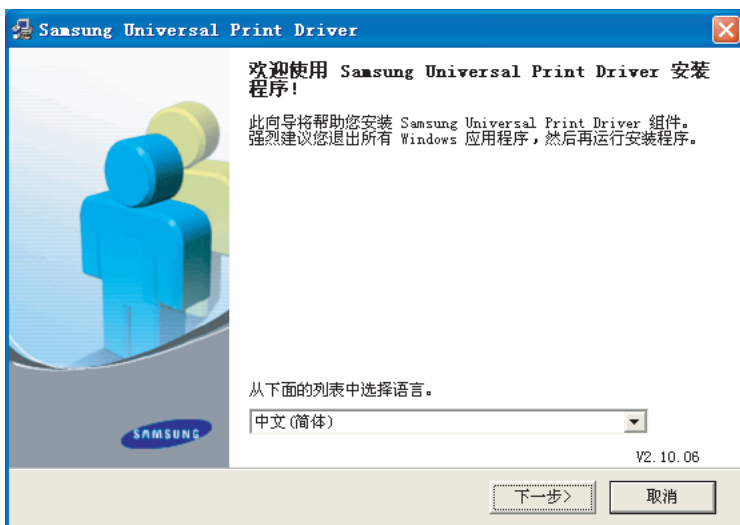
本章将逐步向您介绍安装和卸载 Samsung Universal Print Driver 的步骤。

 以下是 Windows XP 中 PCL 驱动程序的窗口。对于 PS 驱动程序，窗口可能会有所不同，但步骤是相同的。

安装 Samsung Universal Print Driver

在安装驱动程序之前，请检查您的系统是否满足建议的最低要求（请参阅第 4 页上的“系统要求”）。

1. 启动 Web 浏览器并转到 www.samsung.com。
2. 搜索 Samsung Universal Print Driver 安装文件。
3. 启动安装文件。
Samsung Universal Print Driver 安装程序向导打开。
4. 单击**下一步**。如有必要，请从下拉列表中选择所需语言。



在安装窗口打开后，等待安装完成。

5. “安装完成”窗口打开之后，单击**完成**。
要想注册为 Samsung 设备的用户，以便从 Samsung 接收信息，请选中复选框，并单击**完成**。

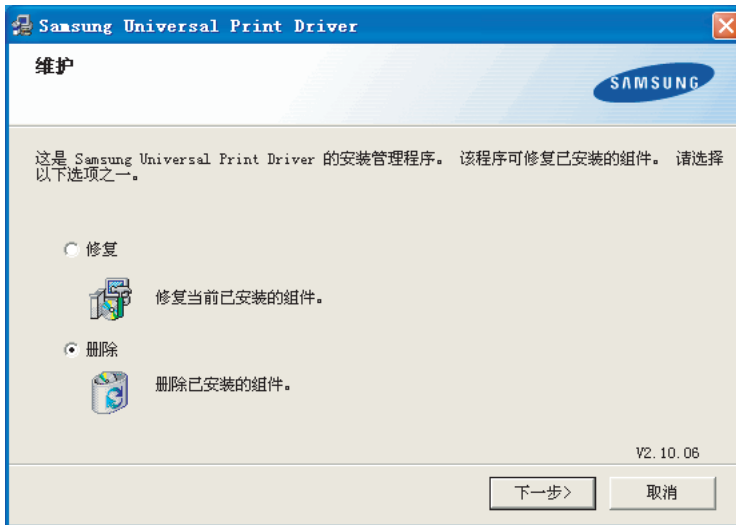


如果驱动程序安装正确，则可在**打印机和传真**文件夹中找到 Samsung Universal Print Driver。

卸载 Samsung Universal Print Driver

如果要卸载 Samsung Universal Print Driver，请执行以下步骤：

1. 从 Windows 开始菜单中选择 > **所有程序** > **Samsung Universal Print Driver** > **维护**。
Samsung Universal Print Driver 安装程序向导打开。
2. 选择**删除**，然后单击**下一步**。



3. 选择您想删除的组件，然后单击**下一步**。
4. 出现确认窗口后，请单击**是**。
5. 卸载完成之后，单击**完成**。

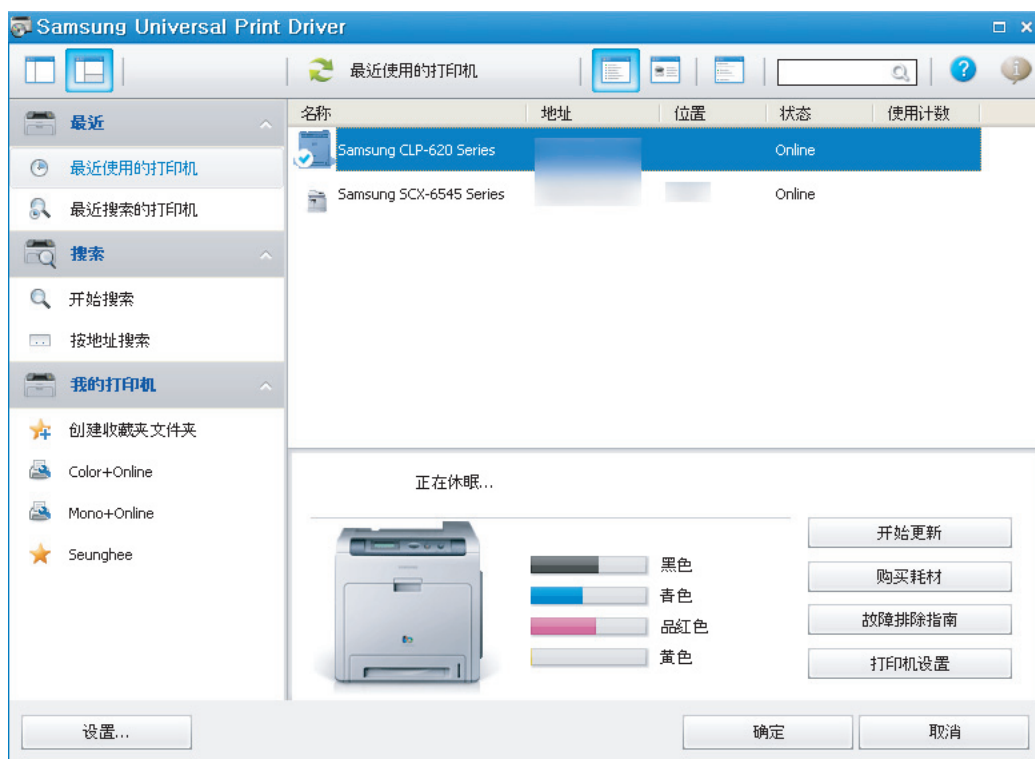
使用 Samsung Universal Print Driver


Samsung Universal Print Driver 的主要用途是安装一个驱动程序 (Samsung Universal Print Driver), 并将其用于不同的打印设备。而且, Samsung Universal Print Driver 还具有其他功能, 比如搜索打印设备, 创建收藏夹文件夹和检查设备状态。

访问 Samsung Universal Print Driver

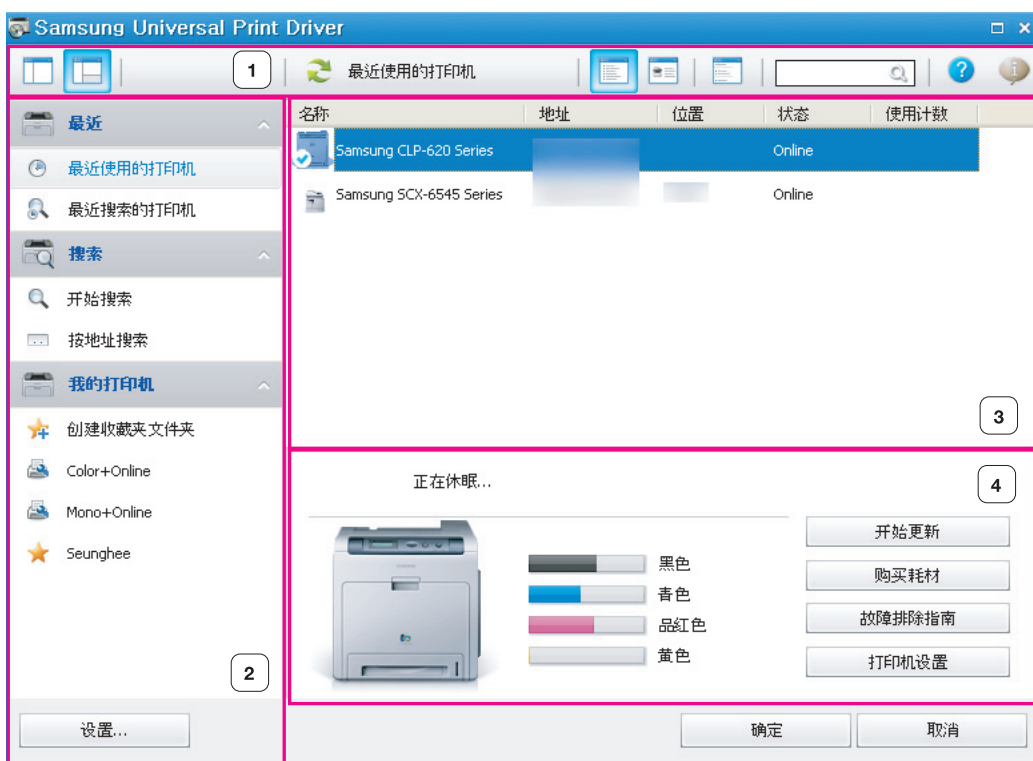
1. 从 Windows 开始菜单中选择**打印机和传真**。
2. 右键单击 Samsung Universal Print Driver。
3. 单击**打印首选项**或**属性**。

打开 Samsung Universal Print Driver 窗口。




 如果没有最近使用的打印机, 则会出现弹出窗口询问您是否搜索打印机。单击**确定**以搜索连接的打印机。

布局概述



| | | |
|----------|------------|---|
| <p>1</p> | <p>布局栏</p> | <p>包含显示选项。</p> <ul style="list-style-type: none"> : 选择 Samsung Universal Print Driver 窗口的布局。如果选择布局 2并且已安装了 Samsung Smart Panel 程序，您可看到状态窗口（编号 4）。 : 刷新列表中的所有打印机信息。 : 选择打印机列表的视图类型。详细信息视图即会显示打印机信息，如地址，位置，状态和系统名称。除较大的打印机图像外，图像视图也显示打印机信息。此选项仅支持 Windows XP（及以上版本）。 : 显示组中的打印机列表。要以组形式布置打印机，请按下此按钮。此选项仅支持 Windows XP（及以上版本）。 <input type="text"/>: 通过关键字（如型号名称）搜索列表中的打印机。 : 打开帮助窗口。 : 显示有关 Samsung Universal Print Driver 的信息。 |
| <p>2</p> | <p>主菜单</p> | <ul style="list-style-type: none"> 最近 <ul style="list-style-type: none"> - 最近使用的打印机：显示最近使用的打印机列表。最近使用的打印机位于列表的顶端。 - 最近搜索的打印机：显示最近查找到的打印机列表。最近查找到的打印机位于列表的顶端。 搜索 <ul style="list-style-type: none"> - 开始搜索：搜索通过 USB 或网络连接的打印机。 - 按地址搜索：通过打印机 IP 地址搜索打印机。 我的打印机 <ul style="list-style-type: none"> - 创建收藏夹文件夹：创建收藏打印机的文件夹。 设置：显示弹出窗口和搜索的选项。 |

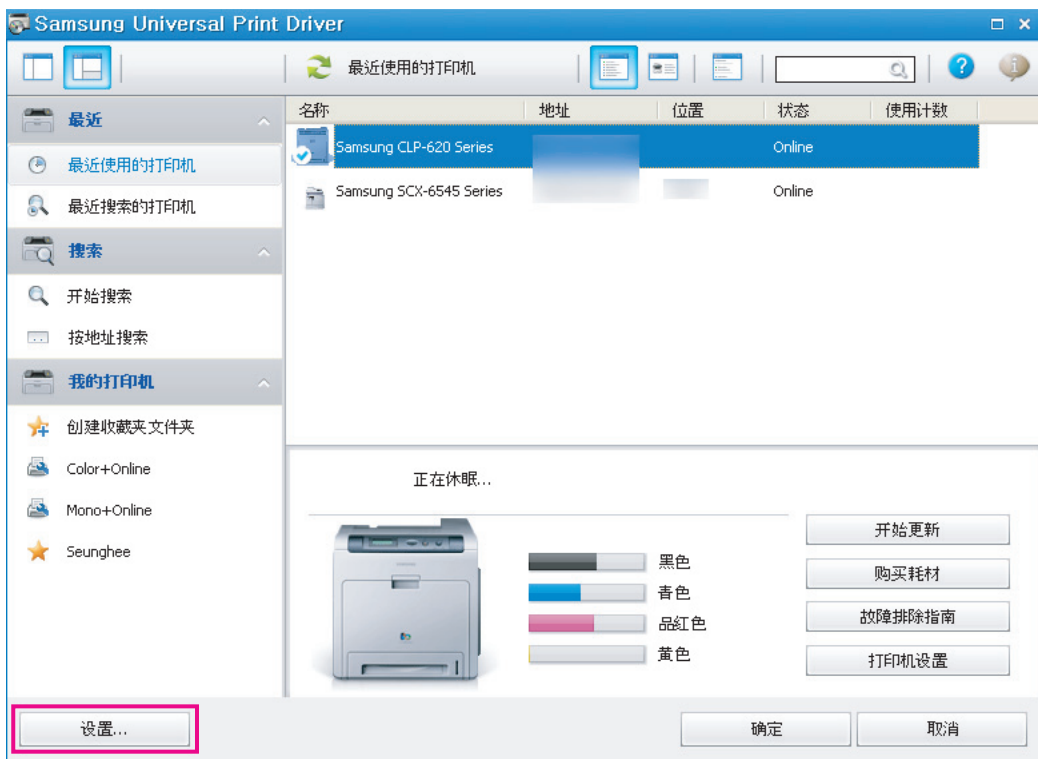
| | | |
|---|-------|---|
| ③ | 打印机列表 | <p>显示打印机列表。按下布局栏中的  按钮时，即可布置组中的打印机。右键单击打印列表区域。选择组布置选项。</p> <ul style="list-style-type: none"> • 在线 / 未知：根据设备的当前状态建立分组。 • 日期：根据打印机的最近使用日期（如今天，昨天，本周，本月等）建立分组。 • 彩色 / 单色：根据机器类型建立分组：彩色打印机或灰度打印机。 • 双面 / 单面：根据机器是否具备双面打印功能建立分组。 |
| ④ | 状态窗口 | <p>显示列表中所选打印机的状态。需要选择布局 2 并安装 Samsung Smart Panel 程序来查看此窗口。</p> <ul style="list-style-type: none"> • 开始更新：更新所选打印机的信息。 • 购买耗材：打开购买耗材的网站。 • 故障排除指南：打开用户指南的故障排除章节。需要安装正在使用型号的 Smart Panel 来查看故障排除指南。 • 打印机设置：打开 SyncThru Web Service，其提供配置和管理打印机的选项。仅可对网络打印机使用此选项。 |

更改 Samsung Universal Print Driver 设置

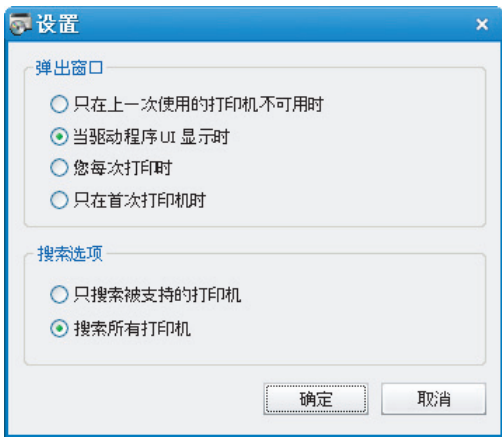
设置弹出窗口选项

可设置在打印时显示 Samsung Universal Print Driver 窗口。此窗口有四个弹出选项：

1. 单击左下角的**设置**按钮。



2. 查看以下弹出窗口选项：



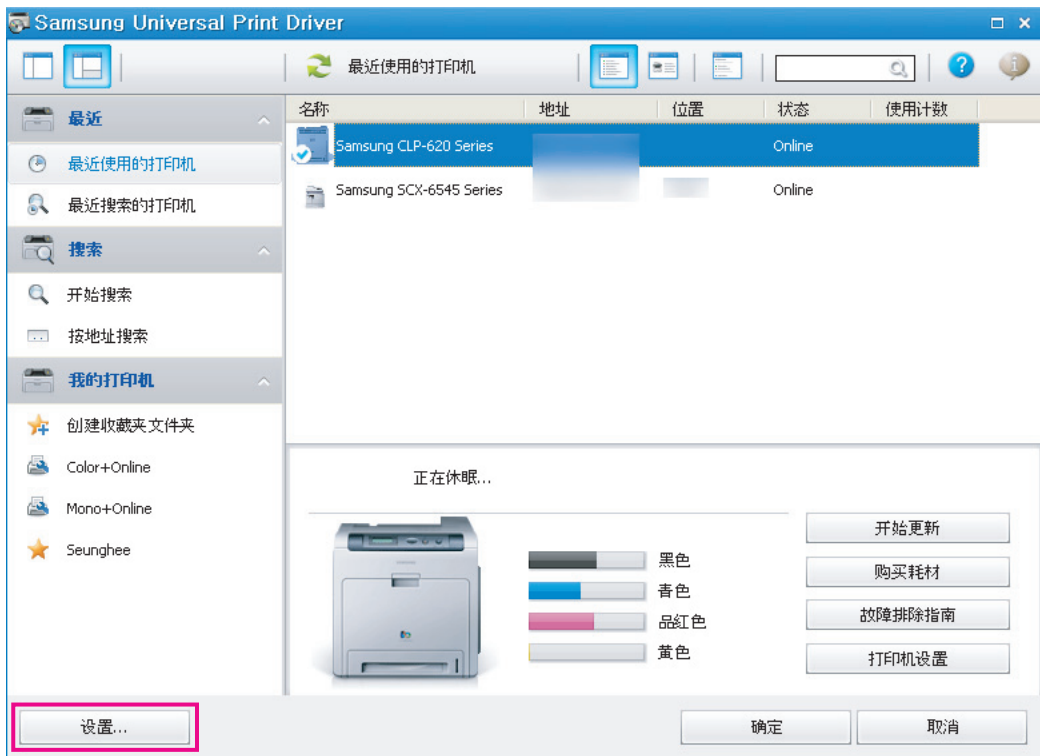
- 只在上一次使用的打印机不可用时：只在上一次使用的打印机不可用时才显示 Samsung Universal Print Driver 窗口。
- 当驱动程序 UI 显示时：打开打印首选项（属性）窗口时显示 Samsung Universal Print Driver 窗口。
- 您每次打印时：您每次打印时显示 Samsung Universal Print Driver 窗口。
- 只在首次打印时：Samsung Universal Print Driver 窗口仅在从应用程序中第一次将 Samsung Universal Print Driver 选择为打印机时显示。

3. 单击确定。

设置打印机搜索选项

要设置 Samsung Universal Print Driver 的搜索选项，请执行以下步骤：



1. 单击左下角的设置按钮。



2. 查看以下**搜索选项**：



- **搜索 Samsung 打印机**：只搜索已连接的 Samsung 打印机。

 单击  查看支持的 Samsung 设备列表。

- **搜索所有打印机**：搜索所有已连接的打印机。

3. 单击**确定**。


搜索打印设备

开始搜索

如果不知道要使用打印设备的 TCP/IP 地址，可使用**开始搜索**选项来搜索设备。按以下步骤操作：

1. 从 Windows **开始**菜单中选择**打印机和传真**。
2. 右键单击 Samsung Universal Print Driver。
3. 单击**打印首选项或属性**。
打开 Samsung Universal Print Driver 窗口。
4. 单击**开始搜索**。

Samsung Universal Print Driver 即会搜索已连接的打印设备。

 根据所选的搜索选项的不同，搜索结果可能会不同（请参阅第 10 页上的“设置打印机搜索选项”）。

按地址搜索

如果知道要使用打印设备的 TCP/IP 地址，可通过键入 TCP/IP 地址来搜索设备。也可输入起始 IP 地址和结束 IP 地址，从 IP 地址范围中搜索设备。按以下步骤操作：

1. 从 Windows **开始**菜单中选择**打印机和传真**。
2. 右键单击 Samsung Universal Print Driver。
3. 单击**打印首选项或属性**。
打开 Samsung Universal Print Driver 窗口。
4. 单击**按地址搜索**。
将显示一个窗口。
5. 输入要搜索的指定 IP 地址，或输入起始地址和结束地址，以在 IP 地址范围中搜索。
6. 单击**搜索**。

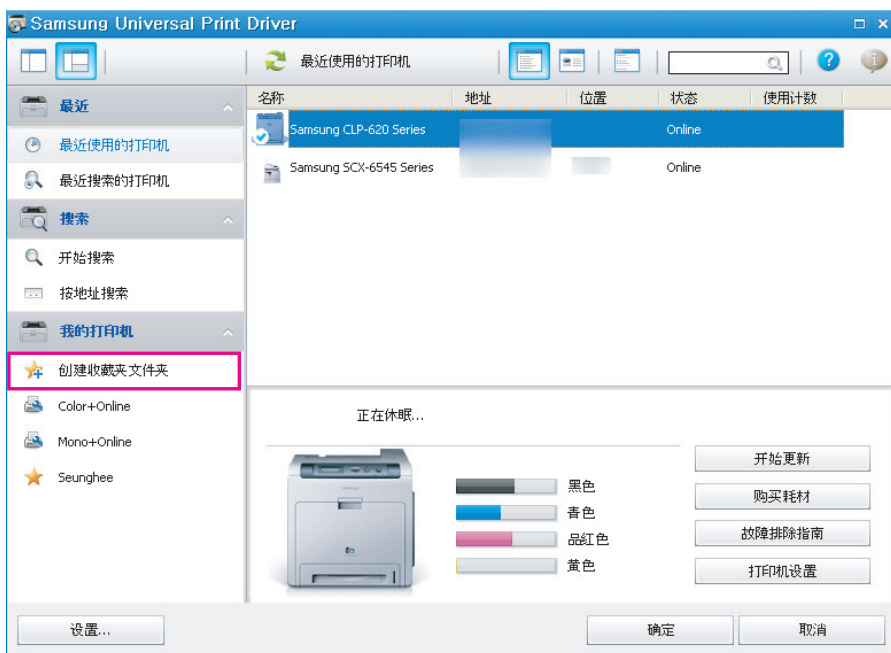
创建收藏夹文件夹

为了方便使用，可创建常用打印机的文件夹。例如，如果您需要在家和工作场所之间移动，则可创建两个不同的打印机文件夹：**家庭**和**工作**，并根据需要来管理打印机。

要创建收藏夹文件夹，请执行以下步骤：

1. 单击**创建收藏夹文件夹**。

将显示**添加新的收藏夹文件夹**窗口。



2. 输入文件夹名称，并设置属性。



- **不使用智能文件夹**：添加普通文件夹。



要将打印机添加到“我的打印机”下的文件夹中，可将打印机从列表中拖放到文件夹中，或右键单击列表中的打印机并选择**移动**或**复制**。

- **使用智能文件夹**：添加特殊文件夹，以动态显示匹配以下属性的打印机：

- 支持彩色
- 仅支持单色
- 双面打印
- 联机：包含当前在线的设备。



使用智能过滤的文件夹会自动扫描设备，因此用户无法手动向 / 从文件夹添加 / 删除打印机。

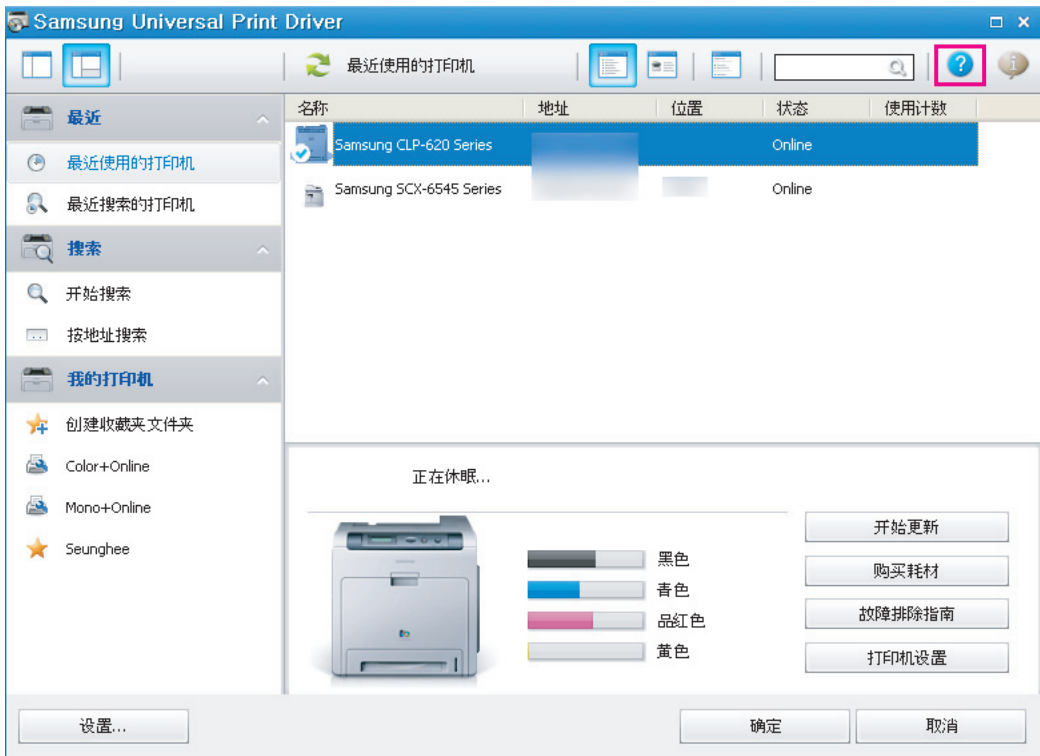
3. 单击**确定**。

我的打印机下添加了新的文件夹。

帮助

单击 Samsung Universal Print Driver 窗口右上角的“帮助”按钮 (?)。

将显示帮助窗口。使用此帮助来解答关于使用 Samsung Universal Print Driver 的问题。



使用 Samsung Universal Print Driver 打印

基本打印

要使用 Samsung Universal Print Driver 打印文档，请执行以下步骤：



以下步骤为从记事本打印的步骤。根据所使用应用程序的不同，菜单名称可能会不同。

1. 在应用程序中打开您希望打印的文件。
2. 从菜单栏上选择 **文件 > 打印**。
3. 从打印机列表中选择 **Samsung Universal Print Driver**。
4. 单击 **确定**。打印开始。

或根据所选的弹出选项（请参阅第 9 页上的“设置弹出窗口选项”）的不同，可能会在打印之前显示 **Samsung Universal Print Driver** 窗口。选择要使用和打印的打印机。

更改所选打印机

1. 从 Windows **开始** 菜单中选择 **打印机和传真**。
2. 右键单击 **Samsung Universal Print Driver**。
3. 单击 **打印首选项** 或 **属性**。
打开 **打印首选项**（**属性**）窗口。
4. 从打印机列表或通过搜索选择另一台打印机（请参阅第 11 页上的“搜索打印设备”）。
5. 单击 **确定**。所有后续打印现在将指定到新的打印机。

License Information

JPEG License

This software is based in part on the work of the Independent JPEG Group.

zlib/png License

This product uses software program which is distributed under the zlib/png license.

OpenSSL License

This product includes software developed by the OpenSSL Project for use in the OpenSSL Toolkit (<http://www.openssl.org/>). Copyright (c) 1998-2008 The OpenSSL Project. All rights reserved.

Redistribution and use in source and binary forms, with or without modification, are permitted provided that the following conditions are met: Redistributions of source code must retain the above copyright notice, this list of conditions and the following disclaimer.

1. Redistributions in binary form must reproduce the above copyright notice, this list of conditions and the following dis-claimer in the documentation and/or other materials provided with the distribution.
2. All advertising materials mentioning features or use of this software must display the following acknowledgment:
3. "This product includes software developed by the OpenSSL Project for use in the OpenSSL Toolkit. (<http://www.openssl.org/>)"
4. The names "OpenSSL Toolkit" and "OpenSSL Project" must not be used to endorse or promote products derived from this software without prior written permission. For written permission, please contact openssl-core@openssl.org.
5. Products derived from this software may not be called "OpenSSL" nor may "OpenSSL" appear in their names without prior written permission of the OpenSSL Project.
6. Redistributions of any form whatsoever must retain the following acknowledgment: "This product includes software developed by the OpenSSL Project for use in the OpenSSL Toolkit (<http://www.openssl.org/>)"

THIS SOFTWARE IS PROVIDED BY THE OpenSSL PROJECT ``AS IS'' AND ANY EXPRESSED OR IMPLIED WARRANTIES, INCLUDING, BUT NOT LIMITED TO, THE IMPLIED WARRANTIES OF MERCHANTABILITY AND FITNESS FOR A PARTICULAR PURPOSE ARE DISCLAIMED. IN NO EVENT SHALL THE OpenSSL PROJECT OR ITS CONTRIBUTORS BE LIABLE FOR ANY DIRECT, INDIRECT, INCIDENTAL, SPECIAL, EXEMPLARY, OR CONSEQUENTIAL DAMAGES (INCLUDING, BUT NOT LIMITED TO, PROCUREMENT OF SUBSTITUTE GOODS OR SERVICES; LOSS OF USE, DATA, OR PROFITS; OR BUSINESS INTERRUPTION) HOWEVER CAUSED AND ON ANY THEORY OF LIABILITY, WHETHER IN CONTRACT, STRICT LIABILITY, OR TORT (INCLUDING NEGLIGENCE OR OTHERWISE) ARISING IN ANY WAY OUT OF THE USE OF THIS SOFTWARE, EVEN IF ADVISED OF THE POSSIBILITY OF SUCH DAMAGE.

This product includes cryptographic software written by Eric Young (eyay@cryptsoft.com). This product includes software written by Tim Hudson (tjh@cryptsoft.com).

Boost Software License

This product uses software program which is distributed under the BSL license.

Boost Software License 1.0 (BSL1.0)

Tue, 2008-02-05 16:36 ? nelson

Permission is hereby granted, free of charge, to any person or organization obtaining a copy of the software and accompanying documentation covered by this license (the "Software") to use, reproduce, display, distribute, execute, and transmit the Software, and to prepare derivative works of the Software, and to permit third-parties to whom the Software is furnished to do so, all subject to the following:

The copyright notices in the Software and this entire statement, including the above license grant, this restriction and the following disclaimer, must be included in all copies of the Software, in whole or in part, and all derivative works of the Software, unless such copies or derivative works are solely in the form of machine-executable object code generated by a source language processor.

THE SOFTWARE IS PROVIDED "AS IS", WITHOUT WARRANTY OF ANY KIND, EXPRESS OR IMPLIED, INCLUDING BUT NOT LIMITED TO THE WARRANTIES OF MERCHANTABILITY, FITNESS FOR A PARTICULAR PURPOSE, TITLE AND NON-INFRINGEMENT. IN NO EVENT SHALL THE COPYRIGHT HOLDERS OR ANYONE DISTRIBUTING THE SOFTWARE BE LIABLE FOR ANY DAMAGES OR OTHER LIABILITY, WHETHER IN CONTRACT, TORT OR OTHERWISE, ARISING FROM, OUT OF OR IN CONNECTION WITH THE SOFTWARE OR THE USE OR OTHER DEALINGS IN THE SOFTWARE.

BSD License

This product uses software programs which are distributed under the BSD license. BSD license SW : PNG:The Definitive Guide, Intel Mobile Platform SDK, Info-zip.

Infozip

This is version 2007-Mar-4 of the Info-ZIP license. The definitive version of this document should be available at <ftp://ftp.info-zip.org/pub/infozip/license.html> indefinitely and a copy at <http://www.info-zip.org/pub/infozip/license.html>.

Copyright (c) 1990-2007 Info-ZIP. All rights reserved.

For the purposes of this copyright and license, "Info-ZIP" is defined as the following set of individuals:

Mark Adler, John Bush, Karl Davis, Harald Denker, Jean-Michel Dubois, Jean-loup Gailly, Hunter Goatley, Ed Gordon, Ian Gorman, Chris Herborth, Dirk Haase, Greg Hartwig, Robert Heath, Jonathan Hudson, Paul Kienitz, David Kirschbaum, Johnny Lee, Onno van der Linden, Igor Mandrichenko, Steve P. Miller, Sergio Monesi, Keith Owens, George Petrov, Greg Roelofs, Kai Uwe Rommel, Steve Salisbury, Dave Smith, Steven M. Schweda, Christian Spieler, Cosmin Truta, Antoine Verheijen, Paul von Behren, Rich Wales, Mike White. This software is provided "as is," without warranty of any kind, express or implied. In no event shall Info-ZIP or its contributors be held liable for any direct, indirect, incidental, special or consequential damages arising out of the use of or inability to use this software.

Permission is granted to anyone to use this software for any purpose, including commercial applications, and to alter it and redistribute it freely, subject to the above disclaimer and the following restrictions:

- Redistributions of source code (in whole or in part) must retain the above copyright notice, definition, disclaimer, and this list of conditions.
- Redistributions in binary form (compiled executables and libraries) must reproduce the above copyright notice, definition, disclaimer, and this list of conditions in documentation and/or other materials provided with the distribution. The sole exception to this condition is redistribution of a standard UnZipSFX binary (including SFXWiz) as part of a self-extracting archive; that is permitted without inclusion of this license, as long as the normal SFX banner has not been removed from the binary or disabled.
- Altered versions--including, but not limited to, ports to new operating systems, existing ports with new graphical interfaces, versions with modified or added functionality, and dynamic, shared, or static library versions not from Info-ZIP--must be plainly marked as such and must not be misrepresented as being the original source or, if binaries, compiled from the original source. Such altered versions also must not be misrepresented as being Info-ZIP releases--including, but not limited to, labeling of the altered versions with the names "Info-ZIP" (or any variation thereof, including, but not limited to, different capitalizations), "Pocket UnZip," "WiZ" or "MacZip" without the explicit permission of Info-ZIP. Such altered versions are further prohibited from misrepresentative use of the Zip-Bugs or Info-ZIP e-mail addresses or the Info-ZIP URL(s), such as to imply Info-ZIP will provide support for the altered versions.
- Info-ZIP retains the right to use the names "Info-ZIP," "Zip," "UnZip," "UnZipSFX," "WiZ," "Pocket UnZip," "Pocket Zip," and "MacZip" for its own source and binary releases.

Intel Mobile Platform SDK

Copyright (c) <2008>, Intel Corp. All rights reserved.

Redistribution and use in source and binary forms, with or without modification, are permitted provided that the following conditions are met:

- Redistributions of source code must retain the above copyright notice, this list of conditions and the following disclaimer.
- Redistributions in binary form must reproduce the above copyright notice, this list of conditions and the following disclaimer in the documentation and/or other materials provided with the distribution.
- Neither the name of Intel Corporation nor the names of its contributors may be used to endorse or promote products derived from this software without specific prior written permission.

THIS SOFTWARE IS PROVIDED BY THE COPYRIGHT HOLDERS AND CONTRIBUTORS "AS IS" AND ANY EXPRESS OR IMPLIED WARRANTIES, INCLUDING, BUT NOT LIMITED TO, THE IMPLIED WARRANTIES OF MERCHANTABILITY AND FITNESS FOR A PARTICULAR PURPOSE ARE DISCLAIMED. IN NO EVENT SHALL THE COPYRIGHT OWNER OR CONTRIBUTORS BE LIABLE FOR ANY DIRECT, INDIRECT, INCIDENTAL, SPECIAL, EXEMPLARY, OR CONSEQUENTIAL DAMAGES (INCLUDING, BUT NOT LIMITED TO, PROCUREMENT OF SUBSTITUTE GOODS OR SERVICES; LOSS OF USE, DATA, OR PROFITS; OR BUSINESS INTERRUPTION) HOWEVER CAUSED AND ON ANY THEORY OF LIABILITY, WHETHER IN CONTRACT, STRICT LIABILITY, OR TORT (INCLUDING NEGLIGENCE OR OTHERWISE) ARISING IN ANY WAY OUT OF THE USE OF THIS SOFTWARE, EVEN IF ADVISED OF THE POSSIBILITY OF SUCH DAMAGE.

PNG:The Definitive Guide

Copyright (c) 1998-2001 Greg Roelofs. All rights reserved.

This software is provided "as is," without warranty of any kind, express or implied. In no event shall the author or contributors be held liable for any damages arising in any way from the use of this software. Permission is granted to anyone to use this software for any purpose, including commercial applications, and to alter it and redistribute it freely, subject to the following restrictions:

- Redistributions of source code must retain the above copyright notice, disclaimer, and this list of conditions.
- Redistributions in binary form must reproduce the above copyright notice, disclaimer, and this list of conditions in the documentation and/or other materials provided with the distribution.
- All advertising materials mentioning features or use of this software must display the following acknowledgment:

This product includes software developed by Greg Roelofs and contributors for the book, "PNG: The Definitive Guide," published by O'Reilly and Associates.

Open BSD

Copyright (c) 2004 by Internet Systems Consortium, Inc. ("ISC")

Copyright (c) 1996,1999 by Internet Software Consortium.

Permission to use, copy, modify, and distribute this software for any purpose with or without fee is hereby granted, provided that the above copyright notice and this permission notice appear in all copies.

THE SOFTWARE IS PROVIDED "AS IS" AND ISC DISCLAIMS ALL WARRANTIES WITH REGARD TO THIS SOFTWARE INCLUDING ALL IMPLIED WARRANTIES OF MERCHANTABILITY AND FITNESS. IN NO EVENT SHALL ISC BE LIABLE FOR ANY SPECIAL, DIRECT, INDIRECT, OR CONSEQUENTIAL DAMAGES OR ANY DAMAGES WHATSOEVER RESULTING FROM LOSS OF USE, DATA OR PROFITS, WHETHER IN AN ACTION OF CONTRACT, NEGLIGENCE OR OTHER TORTIOUS ACTION, ARISING OUT OF OR IN CONNECTION WITH THE USE OR PERFORMANCE OF THIS SOFTWARE.

Common Public License Version 1.0 (CPL)

This product uses software program which is distributed under the CPL license. The following CPL software source codes that have been used in this product can be provided after asking to oss.request@samsung.com. CPL software : WTL(Windows Template Library)

THE ACCOMPANYING PROGRAM IS PROVIDED UNDER THE TERMS OF THIS COMMON PUBLIC LICENSE ("AGREEMENT"). ANY USE, REPRODUCTION OR DISTRIBUTION OF THE PROGRAM CONSTITUTES RECIPIENT'S ACCEPTANCE OF THIS AGREEMENT.

1. DEFINITIONS

"Contribution" means:

- a. in the case of the initial Contributor, the initial code and documentation distributed under this Agreement, and
- b. in the case of each subsequent Contributor:
 - changes to the Program, and
 - additions to the Program;

where such changes and/or additions to the Program originate from and are distributed by that particular Contributor. A Contribution 'originates' from a Contributor if it was added to the Program by such Contributor itself or anyone acting on such Contributor's behalf. Contributions do not include additions to the Program which: (i) are separate modules of software distributed in conjunction with the Program under their own license agreement, and (ii) are not derivative works of the Program.

"Contributor" means any person or entity that distributes the Program.

"Licensed Patents " mean patent claims licensable by a Contributor which are necessarily infringed by the use or sale of its Contribution alone or when combined with the Program.

"Program" means the Contributions distributed in accordance with this Agreement.

"Recipient" means anyone who receives the Program under this Agreement, including all Contributors.

2. GRANT OF RIGHTS

- a. Subject to the terms of this Agreement, each Contributor hereby grants Recipient a non-exclusive, worldwide, royalty-free copyright license to reproduce, prepare derivative works of, publicly display, publicly perform, distribute and sublicense the Contribution of such Contributor, if any, and such derivative works, in source code and object code form.
- b. Subject to the terms of this Agreement, each Contributor hereby grants Recipient a non-exclusive, worldwide, royalty-free patent license under Licensed Patents to make, use, sell, offer to sell, import and otherwise transfer the Contribution of such Contributor, if any, in source code and object code form. This patent license shall apply to the combination of the Contribution and the Program if, at the time the Contribution is added by the Contributor, such addition of the Contribution causes such combination to be covered by the Licensed Patents. The patent license shall not apply to any other combinations which include the Contribution. No hardware per se is licensed hereunder.
- c. Recipient understands that although each Contributor grants the licenses to its Contributions set forth herein, no assurances are provided by any Contributor that the Program does not infringe the patent or other intellectual property rights of any other entity. Each Contributor disclaims any liability to Recipient for claims brought by any other entity based on infringement of intellectual property rights or otherwise. As a condition to exercising the rights and licenses granted hereunder, each Recipient hereby assumes sole responsibility to secure any other intellectual property rights needed, if any. For example, if a third party patent license is required to allow Recipient to distribute the Program, it is Recipient's responsibility to acquire that license before distributing the Program.
- d. Each Contributor represents that to its knowledge it has sufficient copyright rights in its Contribution, if any, to grant the copyright license set forth in this Agreement.

3. REQUIREMENTS

A Contributor may choose to distribute the Program in object code form under its own license agreement, provided that:

- a. it complies with the terms and conditions of this Agreement; and
- b. its license agreement:
 - effectively disclaims on behalf of all Contributors all warranties and conditions, express and implied, including warranties or conditions of title and non-infringement, and implied warranties or conditions of merchantability and fitness for a particular purpose;
 - effectively excludes on behalf of all Contributors all liability for damages, including direct, indirect, special, incidental and consequential damages, such as lost profits;

- states that any provisions which differ from this Agreement are offered by that Contributor alone and not by any other party; and
- states that source code for the Program is available from such Contributor, and informs licensees how to obtain it in a reasonable manner on or through a medium customarily used for software exchange.

When the Program is made available in source code form:

- it must be made available under this Agreement; and
- ia copy of this Agreement must be included with each copy of the Program.

Contributors may not remove or alter any copyright notices contained within the Program. Each Contributor must identify itself as the originator of its Contribution, if any, in a manner that reasonably allows subsequent Recipients to identify the originator of the Contribution.

4. COMMERCIAL DISTRIBUTION

Commercial distributors of software may accept certain responsibilities with respect to end users, business partners and the like. While this license is intended to facilitate the commercial use of the Program, the Contributor who includes the Program in a commercial product offering should do so in a manner which does not create potential liability for other Contributors. Therefore, if a Contributor includes the Program in a commercial product offering, such Contributor ("Commercial Contributor") hereby agrees to defend and indemnify every other Contributor ("Indemnified Contributor") against any losses, damages and costs (collectively "Losses") arising from claims, lawsuits and other legal actions brought by a third party against the Indemnified Contributor to the extent caused by the acts or omissions of such Commercial Contributor in connection with its distribution of the Program in a commercial product offering. The obligations in this section do not apply to any claims or Losses relating to any actual or alleged intellectual property infringement. In order to qualify, an Indemnified Contributor must: a) promptly notify the Commercial Contributor in writing of such claim, and b) allow the Commercial Contributor to control, and cooperate with the Commercial Contributor in, the defense and any related settlement negotiations. The Indemnified Contributor may participate in any such claim at its own expense.

For example, a Contributor might include the Program in a commercial product offering, Product X. That Contributor is then a Commercial Contributor. If that Commercial Contributor then makes performance claims, or offers warranties related to Product X, those performance claims and warranties are such Commercial Contributor's responsibility alone. Under this section, the Commercial Contributor would have to defend claims against the other Contributors related to those performance claims and warranties, and if a court requires any other Contributor to pay any damages as a result, the Commercial Contributor must pay those damages.

5. NO WARRANTY

EXCEPT AS EXPRESSLY SET FORTH IN THIS AGREEMENT, THE PROGRAM IS PROVIDED ON AN "AS IS" BASIS, WITHOUT WARRANTIES OR CONDITIONS OF ANY KIND, EITHER EXPRESS OR IMPLIED INCLUDING, WITHOUT LIMITATION, ANY WARRANTIES OR CONDITIONS OF TITLE, NON-INFRINGEMENT, MERCHANTABILITY OR FITNESS FOR A PARTICULAR PURPOSE. Each Recipient is solely responsible for determining the appropriateness of using and distributing the Program and assumes all risks associated with its exercise of rights under this Agreement, including but not limited to the risks and costs of program errors, compliance with applicable laws, damage to or loss of data, programs or equipment, and unavailability or interruption of operations.

6. DISCLAIMER OF LIABILITY

EXCEPT AS EXPRESSLY SET FORTH IN THIS AGREEMENT, NEITHER RECIPIENT NOR ANY CONTRIBUTORS SHALL HAVE ANY LIABILITY FOR ANY DIRECT, INDIRECT, INCIDENTAL, SPECIAL, EXEMPLARY, OR CONSEQUENTIAL DAMAGES (INCLUDING WITHOUT LIMITATION LOST PROFITS), HOWEVER CAUSED AND ON ANY THEORY OF LIABILITY, WHETHER IN CONTRACT, STRICT LIABILITY, OR TORT (INCLUDING NEGLIGENCE OR OTHERWISE) ARISING IN ANY WAY OUT OF THE USE OR DISTRIBUTION OF THE PROGRAM OR THE EXERCISE OF ANY RIGHTS GRANTED HEREUNDER, EVEN IF ADVISED OF THE POSSIBILITY OF SUCH DAMAGES.

7. GENERAL

If any provision of this Agreement is invalid or unenforceable under applicable law, it shall not affect the validity or enforceability of the remainder of the terms of this Agreement, and without further action by the parties hereto, such provision shall be reformed to the minimum extent necessary to make such provision valid and enforceable. If Recipient institutes patent litigation against a Contributor with respect to a patent applicable to software (including a cross-claim or counterclaim in a lawsuit), then any patent licenses granted by that Contributor to such Recipient under this Agreement shall terminate as of the date such litigation is filed. In addition, if Recipient institutes patent litigation against any entity (including a cross-claim or counterclaim in a lawsuit) alleging that the Program itself (excluding combinations of the Program with other software or hardware) infringes such Recipient's patent(s), then such Recipient's rights granted under Section 2(b) shall terminate as of the date such litigation is filed. All Recipient's rights under this Agreement shall terminate if it fails to comply with any of the material terms or conditions of this Agreement and does not cure such failure in a reasonable period of time after becoming aware of such noncompliance. If all Recipient's rights under this Agreement terminate, Recipient agrees to cease use and distribution of the Program as soon as reasonably practicable. However, Recipient's obligations under this Agreement and any licenses granted by Recipient relating to the Program shall continue and survive. Everyone is permitted to copy and distribute copies of this Agreement, but in order to avoid inconsistency the Agreement is copyrighted and may only be modified in the following manner. The Agreement Steward reserves the right to publish new versions (including revisions) of this Agreement from time to time. No one other than the Agreement Steward has the right to modify this Agreement. IBM is the initial Agreement Steward. IBM may assign the responsibility to serve as the Agreement Steward to a suitable separate entity. Each new version of the Agreement will be given a distinguishing version number. The Program (including Contributions) may always be distributed subject to the version of the Agreement under which it was received. In addition, after a new version of the Agreement is published, Contributor may elect to distribute the Program (including its Contributions) under the new version. Except as expressly stated in Sections 2(a) and 2(b) above, Recipient receives no rights or licenses to the intellectual property of any Contributor under this Agreement, whether expressly,

by implication, estoppel or otherwise. All rights in the Program not expressly granted under this Agreement are reserved. This Agreement is governed by the laws of the State of New York and the intellectual property laws of the United States of America. No party to this Agreement will bring a legal action under this Agreement more than one year after the cause of action arose. Each party waives its rights to a jury trial in any resulting litigation.

索引

A

安装 5

B

版权所有 2

布局 8

C

差异 4

D

打印 13

F

访问 7

J

简介 4

O

open source information 14

S

Search by address 11

Search Now 11

设置 9

弹出窗口 9

搜索选项 10

使用 7

搜索

按地址搜索按钮 11

开始搜索按钮 11

TCPIP 11

W

文件夹 12

X

系统要求 4

卸载 6