

多种类型小外径压力表系列

More kinds small diameter pressure gauge



钢内机塑料罩压紧式压力表
Stainless steel internals pressure gauge with plastic window

索引页 Index: PA.06.1



50 径向螺钉上紧式压力表
50 Bottom mounting, fixed with screw General Service Pressure Gauge

索引页 Index: PA.06.9



40 轴向卡子安装一般压力表
40 Back U clamp mounting General Service Pressure Gauge

索引页 Index: PA.06.2



40 螺钉上紧式罩壳压力表
40 Fixed with screw General Service Pressure Gauge

索引页 Index: PA.06.10



43/53 充油耐震压力表
43/53 Liquid filling & Vibration-proof pressure gauge

索引页 Index: PA.06.3



塑壳锅炉压力表
Plastic boiler pressure gauge

索引页 Index: PA.06.11



51 罩壳压紧式普通压力表
51 Push in type General Service Pressure Gauge

索引页 Index: PA.06.5



轴向旋压密封小钢表
Back mounting roll formed small steel pressure gauge

索引页 Index: PA.06.12



41、51 充油耐震压力表
41、51 Liquid filling & Vibration-proof pressure gauge

索引页 Index: PA.06.6



40 小外径不锈钢密封型压力表
40 stainless steel obturation pressure gauge

索引页 Index: PA.06.13



40、50 铁壳旋压密封式压力表
43、53 Iron case, Roll formed General Service Pressure Gauge

索引页 Index: PA.06.7

常用量程代码表
Table of ranges

索引页 Index: PA.06.14

选型指南
Type choose

索引页 Index: PA.06.15



G36/G46/G44 轴向罩壳旋紧式压力表
G36/G46/G44 Back mounting, Screw type General Service Pressure Gauge

索引页 Index: PA.06.8



钢内机塑料玻璃罩压紧式压力表 YTF-040. ZO. 505

Stainless Steel Internals Plastic Window Glass Pushed in Pressure Gauge

产品特性：

轴向结构
塑料玻璃罩压紧式设计
钢内机、
304 外壳，塑料外壳、铁喷白塑外壳可选
接头与钢外壳激光焊接
圆柱配带过滤网接头特殊连接
2.5% 精度等级
测量范围：10Bar; 25Bar; 30Bar

仪表型号标示

Type code
YTF-040. ZO. 505 (YTF-40Z)

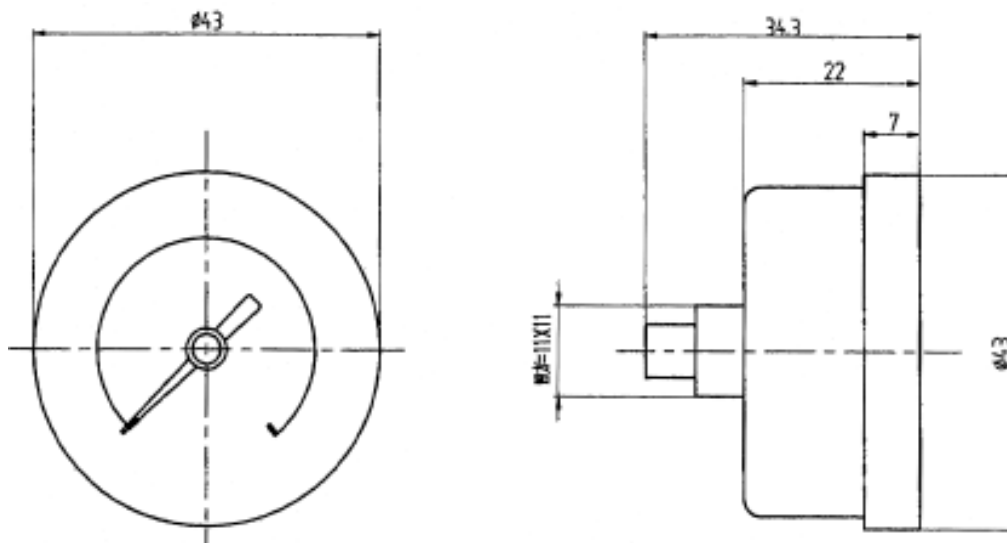
CHARACTERISTICS

Back mounting
Plastic Window Glass Pushed in
Stainless Steel Internals
304 case, plastic case, Iron case with white plastic painted available
Laser welding between case and socket
Column with filter basket special connection
Accuracy: 2.5%
Range: 10Bar; 25Bar; 30Bar



几何尺寸 DIMENSIONS

单位 Unit (mm)



40 轴向卡子安装一般压力表 Y-040.ZK.204

40 Back clamp mounting General Service Pressure Gauge

产品特性：

轴向卡子安装结构
有机玻璃旋紧式罩壳设计
铁喷黑塑外壳、铜内机
2.5% 精度等级
测量范围：0-0.1MPa ~ 0-6MPa
NPT 1/8 螺纹连接

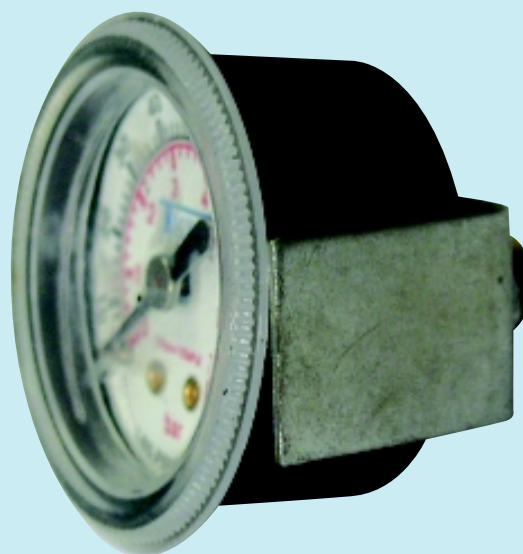
仪表型号标示 Types code：

Y-040. ZK. 204

(Y-40 AZK7)

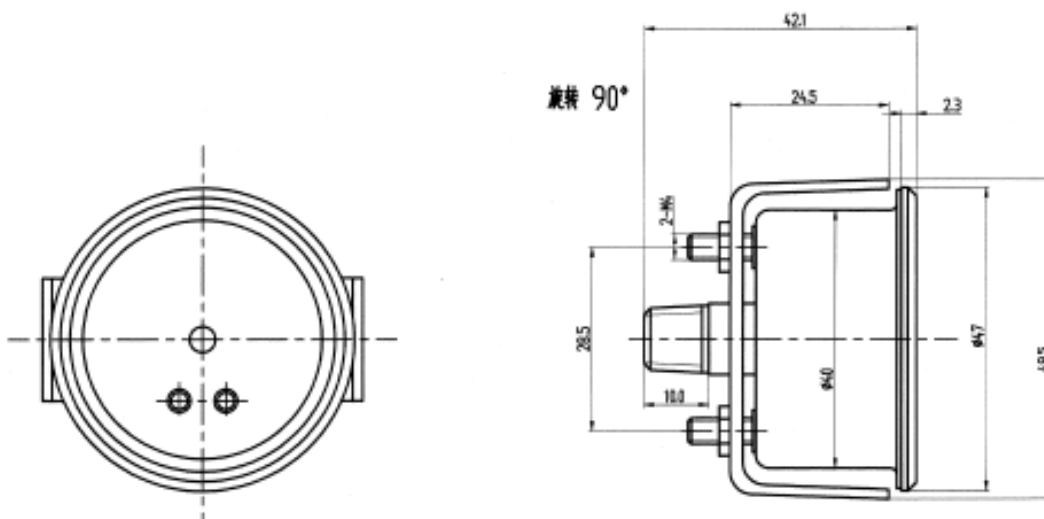
CHARACTERISTICS

Back clamp mounting
Organic glass, screw type
Iron case with plastic painted,
brass internals
Accuracy 2.5%
Range: 0-0.1MPa ~ 0-6MPa
NPT1/8 connection



几何尺寸 DIMENSIONS

单位 Unit (mm)



43/53 轴向安装充油耐震压力表 YTN-043/053

43/53 Back mounting, Liquid filling & Vibration-proof pressure gauge YTFN-043/053

产品特性：

径向结构、轴向、轴向卡子安装结构可选
 不锈钢旋紧式罩壳设计
 304 钢外壳铜内机、钢内机可选

充液耐震，密闭干式可选

2.5% 精度等级

测量范围：

铜内机：0.1MPa ~ 25MPa

钢内机：0.16MPa ~ 25MPa

平板卡子安装可选

CHARACTERISTICS

Bottom mounting, Back mounting, Back clamp mounting available

Stainless Steel, screw type

304 Stainless Steel case, brass internals or Stainless Steel internals available

Liquid filling, Vibration-proof, Obturation and dry type available


Accuracy 2.5%

Range

Brass internals: 0.1MPa ~ 25MPa

Stainless Steel internals: 0.16MPa ~ 25MPa

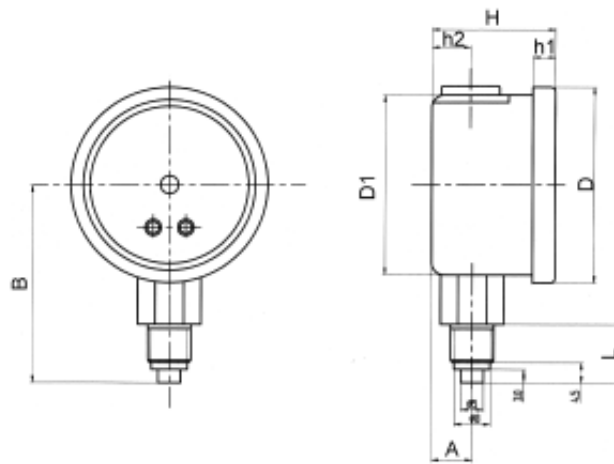
Plain board clamp mounting available

产品展示 Production	仪表类型 Types	型号标示(括号内填外径) Type code
径向 Bottom mounting : 43、 53 	铜内机干式 Brass internals, dry type	Y- () .AO. 513 (YTN-)
	铜内机充液 Stainless Steel internals, liquid filling	YTN - () .AO. 513 (YTN-)
	钢内机干式 Stainless Steel internals, dry type	YTF - () .AO. 513 (YTN-H)
	钢内机充液 Brass internals, liquid filling	YTFN - () .AO. 513 (YTN-H)
轴向 Back mounting : 43、 53 	铜内机干式 Brass internals, dry type	Y - () .ZO. 513 (YTN-Z)
	铜内机充液 Stainless Steel internals, liquid filling	YTN - () .ZO. 513 (YTN-Z)
	钢内机干式 Stainless Steel internals, dry type	YTF - () .ZO. 513 (YTN-HZ)
	钢内机充液 Brass internals, liquid filling	YTFN - () .ZO. 513 (YTN-HZ)
轴向卡子 Back clamp mounting : 43、 53 	Brass internals, dry type	Y - () .ZK. 513 (YTN-ZK)
	铜内机干式 Stainless Steel internals, liquid filling	YTN - () .ZK. 513 (YTN-ZK)
	钢内机干式 Stainless Steel internals, dry type	YTF - () .ZK. 513 (YTN-HZK)
	钢内机充液 Brass internals, liquid filling	YTFN - () .ZK. 513 (YTN-HZK)

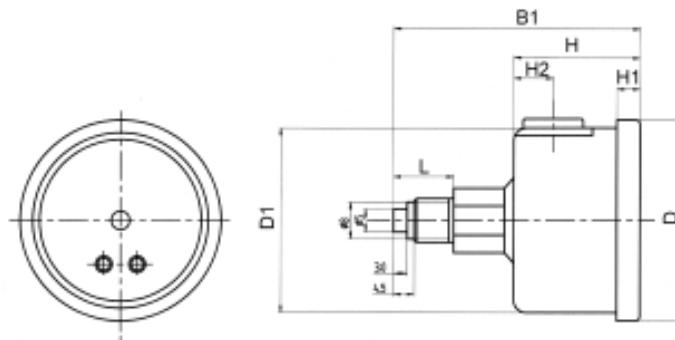
几何尺寸 DIMENSIONS

单位 Unit (mm)

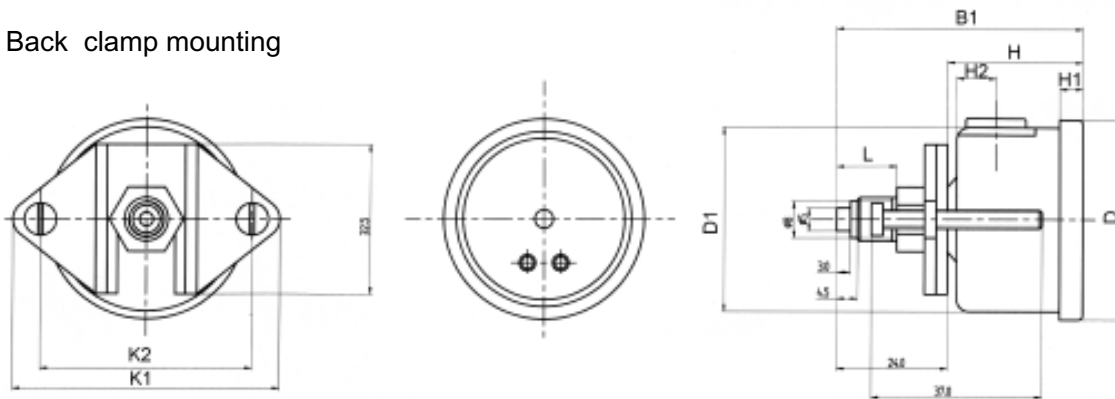
径向 Bottom mounting



轴向 Back mounting



轴向卡子 Back clamp mounting



单位 Unit : mm

型号选择 Types available	D	D1	B1	L	H	H1	H2	K1	K2	B	A
() 043. AO. 513	43.5	40		13	29.5	5	8.5			44	9
() 053. AO. 513	53.5			13	29.5					47.8	9
() 043. ZO. 513	43.5	40	53	13	29.5	5	8.5				
() 053. ZO. 513	53.5	50	52	13	29.5						
() 043. ZK. 513	43.5	40	53	13	29.5	5	8.5	58	46		
() 053. ZK. 513	53	50	52	13	29.5			70	58		



51 罩壳压紧式普通压力表

Y-050.205

51 Push in type General Service Pressure Gauge

产品特性：

径向结构、轴向结构可选
压紧式罩壳设计
铜内机、
反装铜合金机芯
喷黑塑铁壳，轴向喷白塑铁壳可选
M14(M14X1,5)螺纹连接
2.5% 精度等级
测量范围：0.1MPa ~ 6MPa

仪表型号标示 Type code：
Y-050. AO. 205 (Y-50 A17)

仪表型号标示 Type code：
Y-050. ZO. 205 (Y-50 A18)

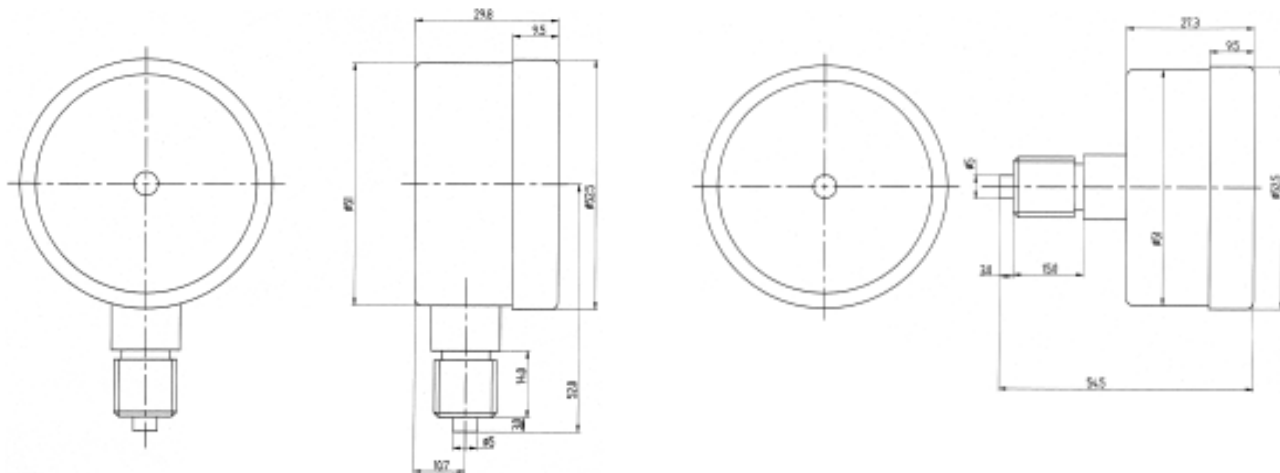
CHARACTERISTICS

Bottom mounting, Back clamp mounting available
Push in type
Brass internals
Left-handed machine copper alloy internals
Iron case with black plastic painted, white available
M14(M14X1,5) connection
Accuracy 2.5%
Range: 0.1MPa ~ 6MPa



几何尺寸 DIMENSIONS

单位 Unit (mm)

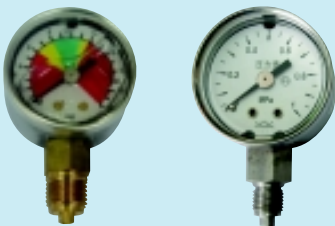



41/51 充油耐震压力表

YTN-041/051

41/51 Liquid filling, Vibration-proof pressure gauge

YTFN-041/051

产品展示 Production	仪表类型 Types	型号标示 Type code
径向 Bottom mounting : 40、 50 	铜内机干式 Brass internals, dry type	Y. () . AO. 503 (YTN-40/50 干)
	铜内机充液 Stainless Steel internals, liquid filling	YTN. () . AO. 503 (YTN-40/50)
	钢内机干式 Stainless Steel internals, dry type	YTF. () . AO. 503 (YTN-40H/50H 干)
	钢内机充液 Brass internals, liquid filling	YTFN. () . AO. 503 (YTN-40H/50H)
轴向 Back mounting : 40、 50  耐热型	铜内机干式 Brass internals, dry type	Y. () . ZO. 503 (YTN-40Z/50Z 干)
	铜内机充液 Stainless Steel internals, liquid filling	YTN. () . ZO. 503 (YTN-40Z/50Z)
	钢内机干式 Stainless Steel internals, dry type	YTF. () . ZO. 503 (YTN-40HZ/50HZ 干)
	钢内机充液 Brass internals, liquid filling	YTFN. () . ZO. 503 (YTN-40HZ/50HZ)

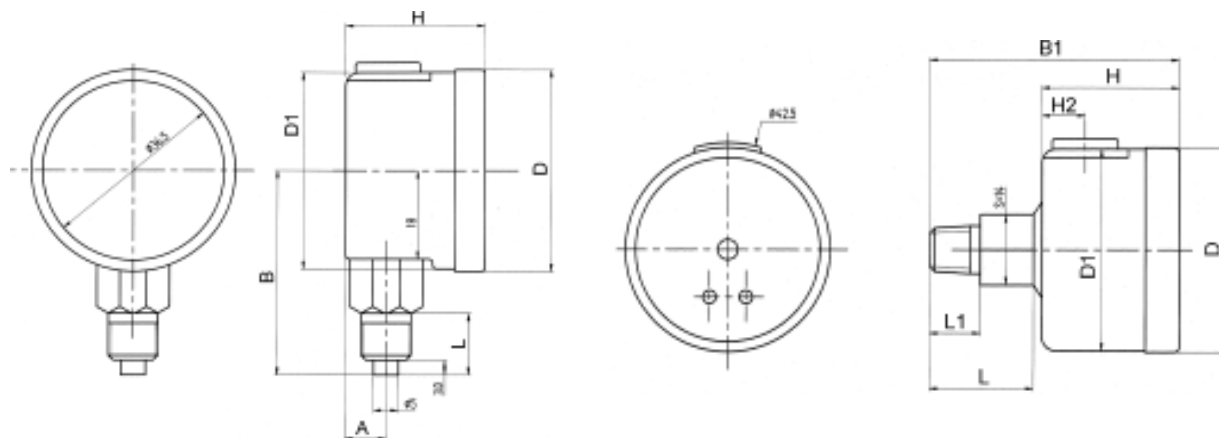
产品特性：

径向或轴向接头两件式结构
 旋压密封罩壳设计
 304 本色钢外壳铜内机、钢内机可选
 充液耐震，密闭干式可选
 2.5% 精度等级
 测量范围：铜内机：0.1MPa ~ 25MPa
 钢内机：0.16MPa ~ 25MPa

CHARACTERISTICS

Bottom mounting or Back mounting, two-piece type
 Roll formed
 304 original color case, brass and Stainless Steel case available
 Liquid filling, Vibration-proof, Obturation and dry type available
 Accuracy 2.5%
 Range
 Brass internals: 0.1MPa ~ 25MPa
 Stainless Steel internals: 0.16MPa ~ 25MPa

几何尺寸 DIMENSIONS



单位 Unit : mm

安装外径结构 Mounting	D	D1	H	H2	A	L	B	B1	L1
40 径向结构 Bottom mounting	40.5	38	28		8.2	12.5	41.5		
50 径向结构 Bottom mounting	50.5		28		9.1	13	47.8		
40 轴向结构 Back mounting	40.5	40	28	8.5		20.5		50	10
50 轴向结构 Back mounting	50.5		28			13		53.2	



北京布莱迪仪器仪表有限公司

PA · 06 -6

40、50 铁壳旋压密封式压力表 Y-040.203

40, 50 Iron case roll formed pressure gauge Y-050.203

产品特性：

- 轴向安装、轴向卡子安装结构
- 旋压密封式罩壳设计
- 铜内机、
- 喷黑塑铁壳
- M10x1 螺纹连接
- 2.5% 精度等级
- 测量范围：0.1MPa ~ 6MPa



CHARACTERISTICS

- Back mounting, Back clamp mounting
- Roll formed
- Brass internals
- Iron case with black plastic painted
- M10x1 connection
- Accuracy 2.5%
- Range: 0.1MPa ~ 6MPa

仪表型号标示

Type code

Y-040. ZK. 203 (Y49-AZK)

Y-050. ZK. 203 (Y512-AZK)

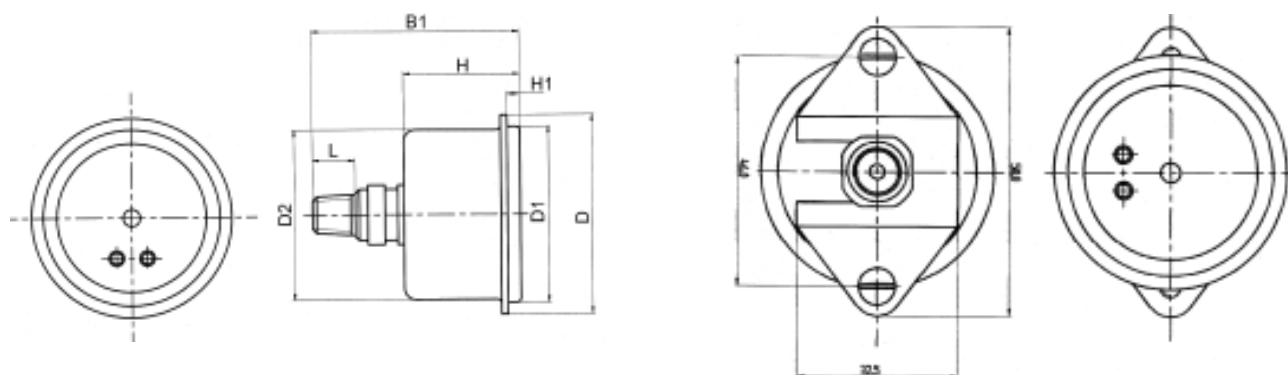
仪表型号标示

Type code

Y-040. ZO. 203 (Y49-AZ)

Y-050. ZO. 203 (Y512-AZ)

几何尺寸 DIMENSIONS



单位 Unit : mm

安装外径结构 Mounting	D	D1	D2	B1	H	H1	L	K1	K2
40 轴向结构 Back mounting	47	41.5	40	50	27.3	3	10		
50 轴向结构 Back mounting	57	51.5		50	29.7	3	13		
40 轴向卡子安装 Back clamp mounting	47	41.5	40	50	24.5	3	8	58	46
50 轴向卡子安装 Back clamp mounting	57	51.5		50	37		13	70	58

G36\G46\44 轴向有机玻璃罩壳旋紧式压力表

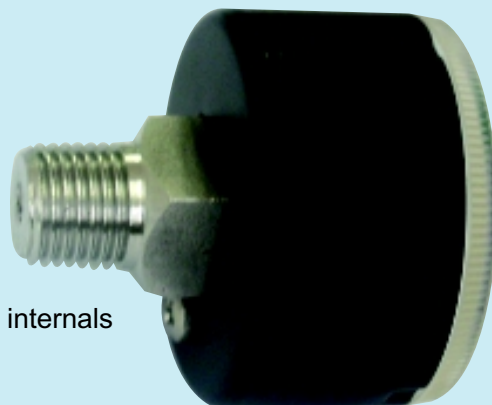
G36/G46/G44 Back mounting, Screw type pressure gauge

产品特性：

轴向安装结构
铜内机、钢内机可选
喷黑塑铁壳
ZG1/4
2.5% 精度等级

CHARACTERISTICS

Back mounting
Brass internals,
Stainless steel zntemals available.
Iron case with black plastic painted
ZG1/4
Accuracy 2.5%



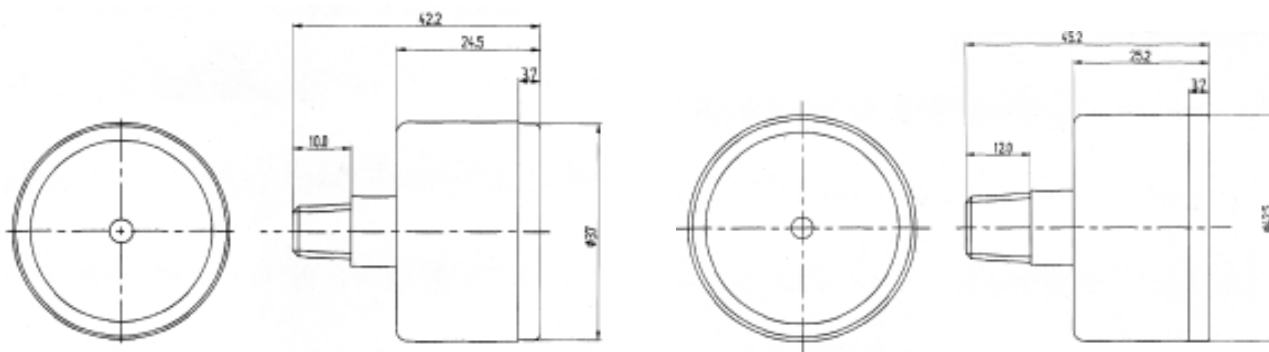
不锈钢内机
Stainless Steel internals
仪表型号标示
Type code
YTF-046. ZO. 204 (YTF-46 Z)

铜内机
Brass internals
仪表型号标示
Type code
Y-036. ZO. 204 (G36Z)
Y-046. ZO. 204 (G46 Z)
Y-044. ZO. 204 (Y-44 日本)



几何尺寸 DIMENSIONS

单位 Unit (mm)



50 径向螺钉上紧式压力表

Y-050. 200

50 Bottom mounting, fixed with screw pressure gauge

YTF-050. 200

产品特性：

径向安装结构
 螺钉上紧式罩壳设计
 铜内机、不锈钢内机可选
 铁壳镀亮铬，304 本色，抛光壳
 ZG1/4
 2.5% 精度等级
 测量范围：0.1MPa ~ 25MPa

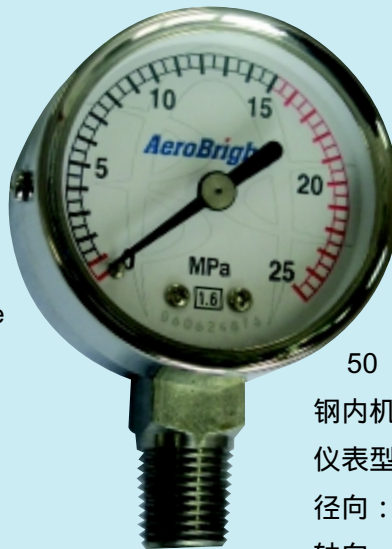
50

铜内机 Brass internals
 仪表型号标示 Type code：
 径向：Y-050. AO. 200 (Y-50DK)
 轴向：Y-050. ZO. 200 (Y-50ZDK)



CHARACTERISTICS

Bottom mounting
 Fixed with screw
 Brass internals, Stainless
 Steel internals available
 Iron case with chrome plated,
 304 original color, polishing case
 ZG1/4
 Accuracy 2.5%
 Range: 0.1MPa ~ 25MPa

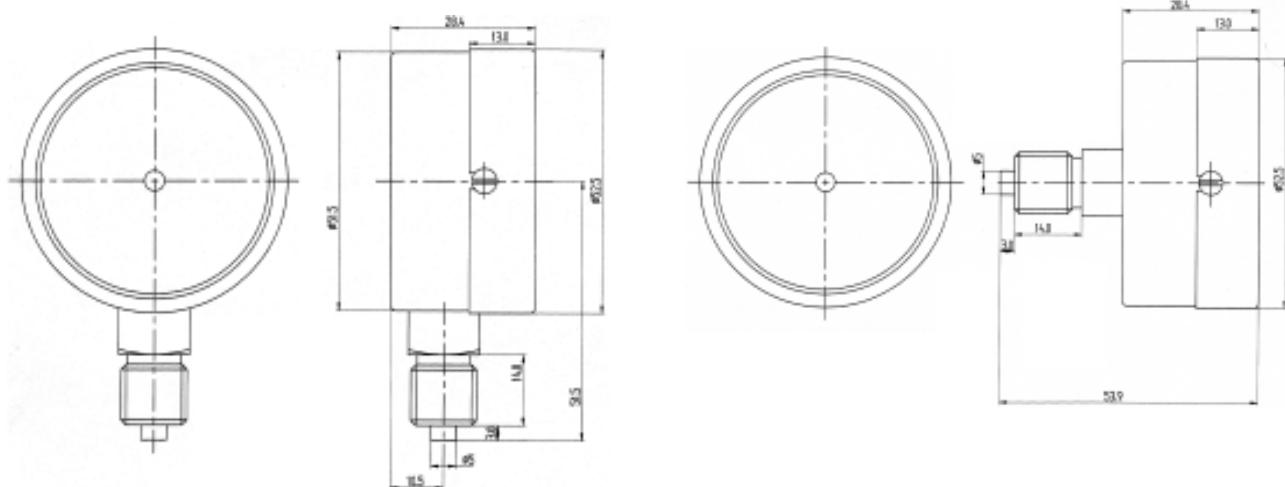


50

钢内机 Stainless Steel internals
 仪表型号标示 Type code：
 径向：YTF-050. AO. 200 (Y-50 AeroB-)
 轴向：YTF-050. ZO. 200 (Y-50Z AeroB-)

几何尺寸 DIMENSIONS

单位 Unit (mm)



40 螺钉上紧式罩壳压力表

Y-040.200

40 Fixed with screw pressure gauge

产品特性：

Y-040. ZO. 200 (Y40AZ11)
铜内机
铁壳喷塑，304 本色壳可选
2.5% 精度
测量范围：0.1MPa ~ 6MPa
M10X1

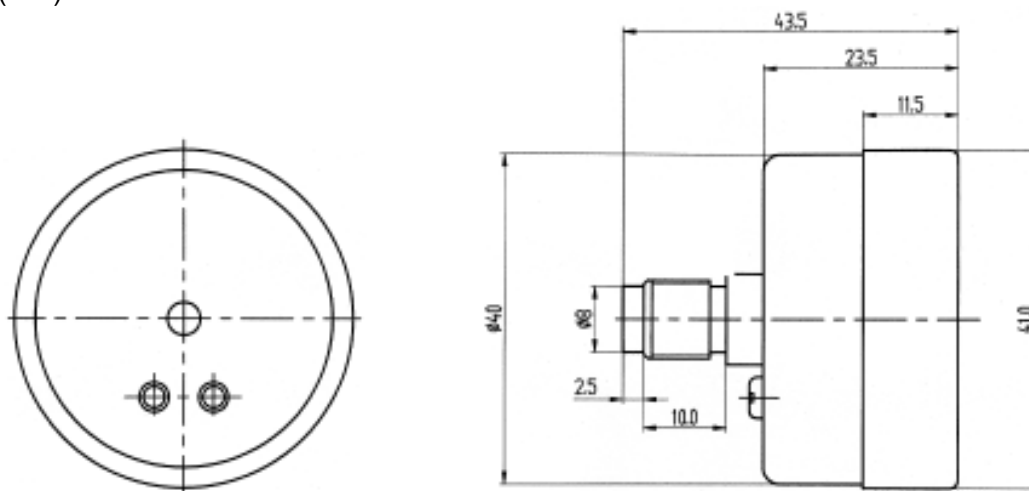
CHARACTERISTICS

Y-040. ZO. 200 (Y40AZ11)
Brass internals
Iron case with plastic painted,
304 original color available
Accuracy 2.5%
Range: 0.1MPa ~ 6MPa
M10X1



几何尺寸 DIMENSIONS

单位 Unit (mm)



北京布莱迪仪器仪表有限公司

PA · 06 -10

塑壳锅炉压力表

YTY-40

Plastic Case Boiler Pressure Gauge

产品特性：

轴向塑料卡子外壳安装结构
铜内机
铜 2.5 毛细管特殊连接
(连接长度及螺线由客户选择)
4% 精度等级 (2.5 级可选)
测量范围：-0.1-0 ~ 0-6Mpa

40

铜内机 Brass internals

仪表型号标示 Type code：

YTY-040. 00. 105(YTY-40Z 庆东)

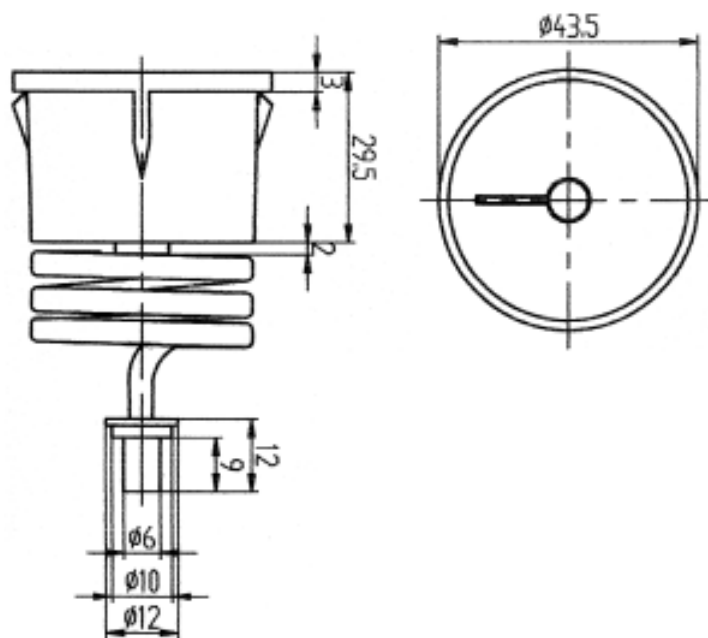
CHARACTERISTICS

Plastic case back U clamp mounting
Brass internals
Brass 2.5 capillary special connection
Accuracy: 4%
Range: -0.1-0 ~ 0-6Mpa



几何尺寸 DIMENSIONS

单位 Unit (mm)



30 轴向旋压密封式小不锈钢压力表 YTF-030.ZO. 533

30 Back mounting Roll formed Stainless Steel Small Pressure Gauge

产品特性：

轴向安装结构
旋压密封式罩壳设计
钢内机、304 本色外壳
ZG1/8 螺纹连接
钢外壳与钢接头激光焊接
上方留有密封塞可选择充液型
2.5% 精度等级
测量范围：0 ~ 20psi

仪表型号标示 Type code：
YTF-030. ZO. 533 (YTF-30 Z)

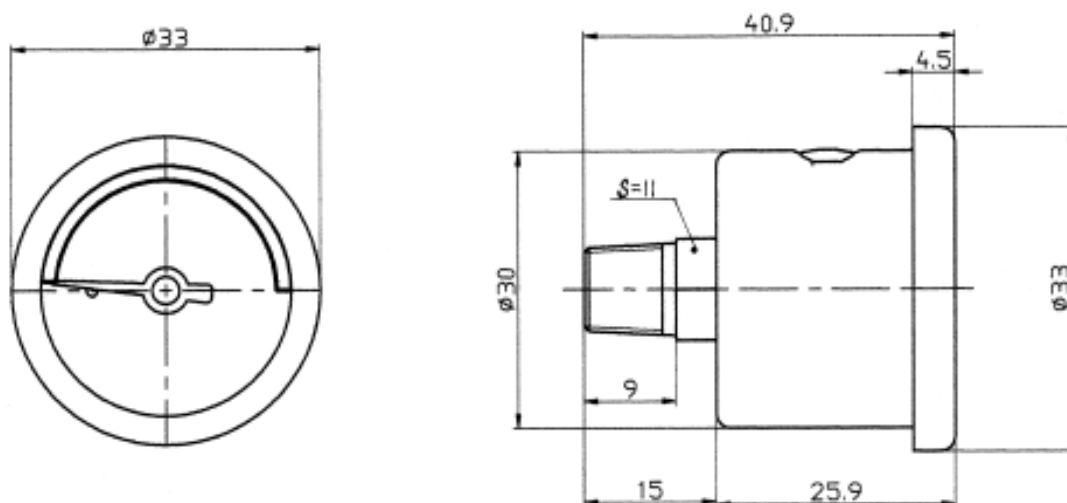
CHARACTERISTICS

Back mounting
Roll formed
Stainless Steel case, 304 original color case
ZG1/8 connection
Laser welding between case and socket
Seal plug on the top, liquid filling type available
Accuracy: 2.5%
Range: 0 ~ 20psi



几何尺寸 DIMENSIONS

单位 Unit (mm)



40 小外径不锈钢密闭型压力表 YTFS-040

40 Small Stainless Steel Obturation type Pressure Gauge

产品特性：

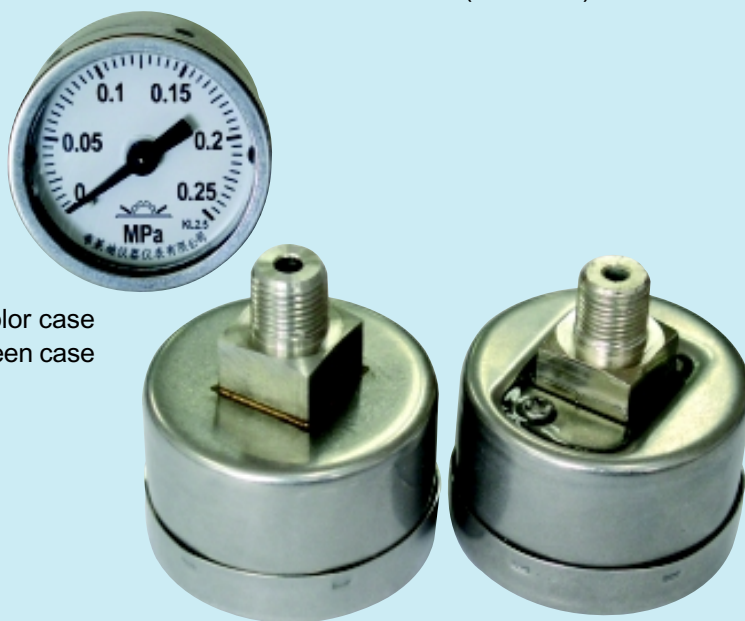
轴向安装结构
压紧式罩壳设计
304 本色钢外壳钢内机
仪表接头与表壳胶密封与激光焊壳式可选。
螺纹连接 NPT1/4(其它连接见选型指南)
2.5% 精度等级
测量范围：0-0.25MPa
 0-0.6 MPa
 0-1 MPa
 0-1.6 MPa

不锈钢焊壳式 Stainless Steel welding case
仪表型号标示 Type code：
YTFS-040. ZO. 535 (YTF-40Z)

胶密封外壳 Stainless Steel welding case
仪表型号标示 Type code：
YTFS-040. ZO. 505 (YTF-40Z)

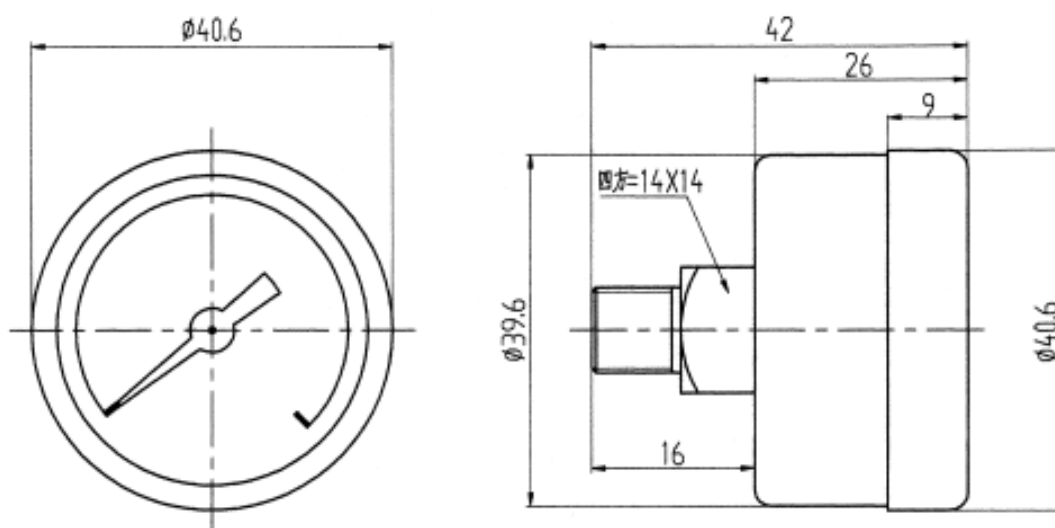
CHARACTERISTICS

Back mounting
Push in type
Stainless Steel case, 304 original color case
Laser welding and glue sealing between case and socket available
connection
Accuracy: 2.5%
Range: 0-0.25MPa
 0-0.6 MPa
 0-1 MPa
 0-1.6 MPa



几何尺寸 DIMENSIONS

单位 Unit (mm)



各种类型小外径压力表

PA

量程范围规格代码表 TABLE OF RANGES (其它规格代码略)

选型代码 code	量程规格 ranges	选型代码 code	量程规格 ranges	选型代码 code	量程规格 ranges
M500	-0.1~0 MPa	M160	2.5 MPa	P090	200 psi
M510	-0.1~0.06MPa	M180	4.0 MPa	P100	300 psi
M520	-0.1~0.15MPa	M200	6.0 MPa	P110	400 psi
M530	-0.1~0.3MPa	M220	10 MPa	P120	600 psi
M540	-0.1~0.5MPa	M230	16 MPa	P130	1000 psi
M550	-0.1~0.9MPa	M240	25 MPa	P140	1500 psi
M560	-0.1~1.5MPa	M270	40 MPa	P150	2000 psi
M570	-0.1~2.4MPa	M280	60 MPa	P160	3000 psi
M010	0.06MPa			P170	4000 psi
M030	0.1 MPa			P180	5000 psi
M040	0.16 MPa	P040	15psi		
M060	0.25 MPa	P045	20psi	b120	16 bar
M080	0.4 MPa	P050	30 psi	b130	20 bar
M100	0.6 MPa	P060	60 psi	b140	25 bar
M120	1.0 MPa	P070	100 psi	b145	30 bar
M140	1.6 MPa	P080	160 psi	b150	40 bar



各种类型小外径压力表

如何选型 HOW TO ORDER

	型号代码 Code	特性说明 Introduction					
基本型号 Basic type	Y	铜合金内机普通标准型 Copper alloy internals, standard type					
	YTY	铜合金内机特殊用途标准型 Copper alloy internals, special purpose standard type					
	YTN	铜合金内机充液耐震型 Copper alloy internals, liquid filling, vibration-proof					
	YTF	不锈钢内机标准型 Stainless Steel internals, standard type					
	YTFN	不锈钢内机充液耐震型 Stainless Steel internals, liquid filling, vibration-proof					
外径 Diameter	040	40mm	050	50mm	036	36mm	
	041	41mm	051	51mm	044	44mm	
	043	43mm	053	53mm	046	46mm	
安装方式 Mounting	AO	径向直接安装 Bottom mounting					
	AT	径向后背板安装 Bottom postnotum mounting					
	ZO	中轴向直接安装 Back mounting					
	ZT	中轴向嵌装 Back panel mounting					
	ZK	轴向卡子安装 Back clamp mounting					
设计代码 Design code	105	塑料表壳压紧式 Plastic case push in type					
	200	铁外壳、螺钉上紧式 Iron case, fixed with screw					
	203	铁外壳旋压密封罩壳 Stainless Steel case, Roll formed					
	204	铁外壳旋紧式 Iron case, Screw type					
	205	铁外壳压紧式 Iron case, Push in type					
	505	不锈钢外壳压紧式 Stainless Steel case Push in type					
	513	2 件式钢外壳旋压密封式 Two-piece type, Stainless Steel case, Roll formed					
	533	不锈钢焊壳旋压密封式 Stainless Steel case welded, Roll formed					
	535	不锈钢焊壳压紧式 Stainless Steel case welded, Push in type					
量程 Ranges	M120	1MPa (其它规格详见量程代码表 See range table)					
连接螺纹 Connection	M10	M10x1	G184	G1/8	Z14	NPT1/4	
	M14	M14x1.5	G14	G1/4			
	R18	ZG1/8	R14	ZG1/4			
备选项 Options	TPB	特殊仪表盘面 Special dial	BDA	1 级精度 Accuracy 1%			
	PHD	缓冲螺钉 Buffer screw	FWP	加不锈钢位号牌 Stainless Steel label			
	SKA	碳钢外壳 Carbon steel case	SBB	有机玻璃 Organic glass			
	SKB	SUS304 外壳 Case	SYB	充硅油 Silicone filling			