

電熱水器

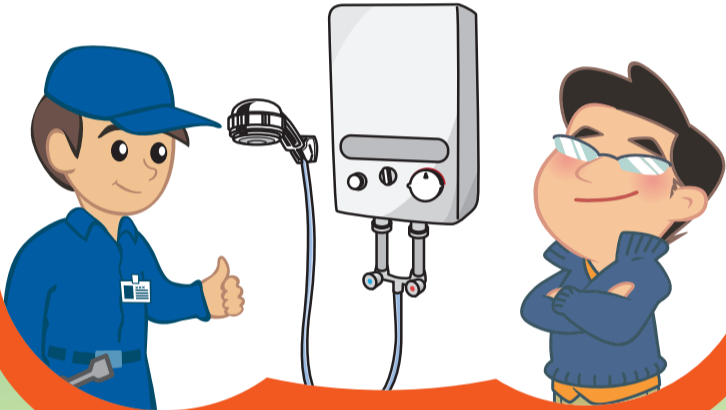
安全須知

Safety Tips for

Electric Water Heaters

★ 在新安裝電熱水器時，固定電力裝置及水管必須分別由註冊電業承辦商及水務署所要求的指定人士#進行安裝。

For new installation of electric water heater, the fixed electrical installations and water pipes shall be installed by a Registered Electrical Contractor (REC) and a designated person# as required by Water Supplies Department (WSD) respectively.



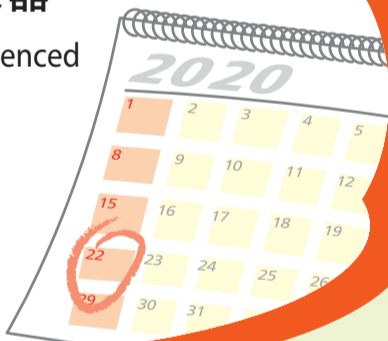
★ 如使用電熱水器時出現異常情況(例如跳掣)，便應立刻停止使用，並聯絡供應商進行檢查和維修。

If there is an abnormality (such as tripping) with the electric water heater while in use, stop using it immediately and contact the supplier for inspection and repair.



★ 定期安排有經驗的技師檢查和保養電熱水器。

Arrange for an experienced technician to inspect and maintain the electric water heater regularly.

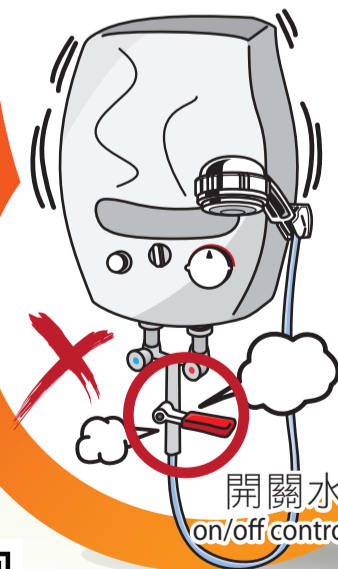


切勿在「花灑儲水式」電熱水器安裝設有開關水掣的花灑頭，亦不應在該等電熱水器的出水喉管加裝開關水掣，或把出水喉管接駁至洗手盆或浴缸，以免電熱水器的水缸因壓力過大而爆炸。

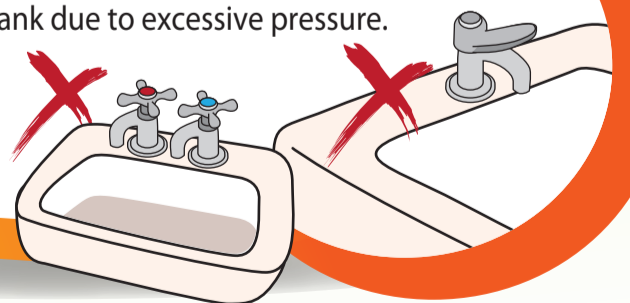


開關水掣
on/off control valve

Do not install shower head with an on/off control valve on a "shower storage type" electric water heater. Also, do not install an on/off control valve at the water outlet of such water heater or connect the water outlet to a basin or bath tub to prevent explosion of the electric water heater's water tank due to excessive pressure.



開關水掣
on/off control valve



★ 使用後，把電熱水器的電源關掉。

Switch off the power source of the electric water heater after use.



#有關指定人士的詳情，請瀏覽水務署網站 www.wsd.gov.hk。

For the details of designated person, please visit WSD website: www.wsd.gov.hk.

如欲查看更多安全須知，請參閱以下網站：
Please visit the following website for more safety tips:



正確使用 + 定期檢修 → 安全用電
Proper Use + Regular Maintenance → Electrical Safety

查詢 Enquiries

電話 Tel.: 1823 傳真 Fax: 2895 4929

網址 Homepage: www.emsd.gov.hk

機電工程署 EMSD